

for Bruce Coey

FILE TP/H

ADAMS + COLLINGWOOD ARCHITECTS

27 BULWER STREET LONDON W12 8AR

Mr David Prout
Executive Director Planning Services,
The Royal Borough of Kensington & Chelsea
Third Floor Town Hall
Hornton Street
LONDON
W8 7NX

530/B/RA

11th June 2008

Dear Mr Prout,

⁵³³
Furniture Cave, Kings Road, London, SW10

Sw

We have been appointed architects by the owners of the Furniture Cave in the Kings Road to investigate the feasibility of developing their building. Please see enclosed location plan for site area. The site is adjacent to the Westfield Park which we understand is owned by the council. The present relationship between the park and the Furniture Cave building is poor. It is a relationship of blank walls and fire escapes. The result is that this area of the park tends to get used for antisocial behavior especially at night. (See attached Photographs).

Our early feasibility work suggests that there could be a considerable benefit to the council park and consequently the design of any development if the south side of this building had a better relationship with the park.

Please could we set up a meeting with you and any other council representatives from the council property department where we could present our early feasibility ideas, discuss the options available and what would be involved in a collaboration between the council and my client their neighbours.

Yours sincerely

Robert Adams

ROBERT ADAMS

cc. Mr Richard Taylor
cc. Mr Jeremy Norman
cc. Mr Derek Frost

7

EX/DIR	HDC	TP	CAC	AD	CLU	AO AK
R.B. K.C.	13 JUN 2008				PLANNING	
N	C	S		APP	IO	REC
HBS			ARB	FPLN	DES	FEES

Site photographs

April 2008

1 of 3

Location

THE FURNITURE CAVE,
533 KINGS ROAD,
LONDON SW10.



View of the Furniture Cave from Kings Road, October 2007

EX DIR	HDC	TP	CAC	AD	CLU	AO AK
R.B. K.C.	13 JUN 2008				PLANNING	
N	C	S		APP	IO	REC
HBS			ARB	FPLN	DES	RES



View of the Furniture Cave from Lots Road, showing part of the elevation to Westfield Park with a blank wall, October 2007



View of the Furniture Cave from Lots Road, showing part of the elevation to Westfield Park with a blank wall, October 2007



View of rear elevation of the Furniture Cave from Westfield Park, October 2007

ADAMS + COLLINGWOOD ARCHITECTS

BULWER YARD, 27 BULWER STREET, LONDON, W12 8AR

E-MAIL info@adamscollingwood.com TELEPHONE 020 8735 5350 FACSIMILE 020 8735 5375

Site photographs

April 2008

2 of 3

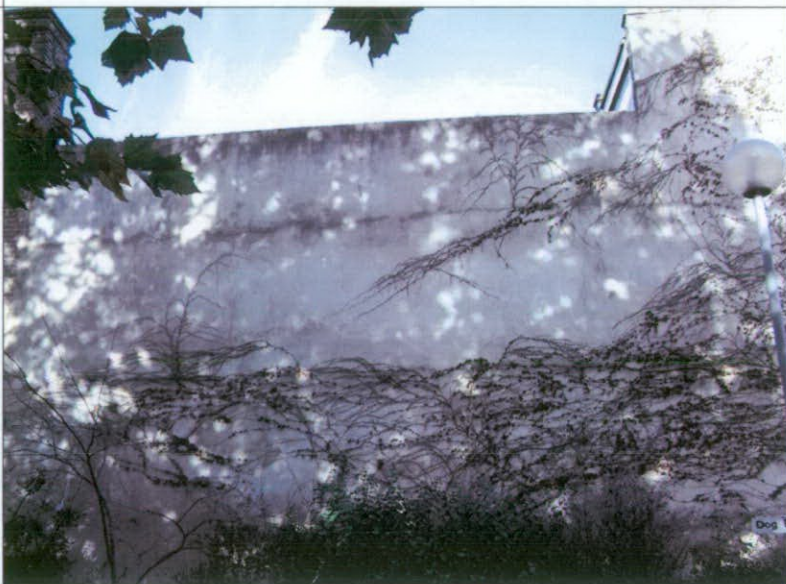
Location

THE FURNITURE CAVE,
533 KINGS ROAD,
LONDON SW10.

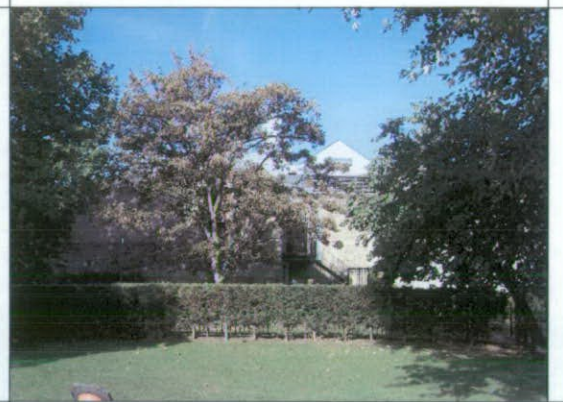


View of rear elevation of Furniture Cave from Westfield Park, February 2008

EX DIR	HDC	TP	CAC	AD	CLU	AO AK
R.B. K.C.	13 JUN 2008				PLANNING	
N	C	S		APP	IO	REC
HBS			ARB	FPLN	DES	FEES



View of rear elevation of Furniture Cave from Westfield Park, February 2008



View of rear elevation of Furniture Cave from Westfield Park, October 2007



View of rear elevation of Furniture Cave from Tetcott Road, February 2008



View of entrance to Westfield Park from Lots Road, October 2007

ADAMS + COLLINGWOOD ARCHITECTS

BULWER YARD, 27 BULWER STREET, LONDON, W12 8AR

E-MAIL info@adamscollingwood.com TELEPHONE 020 8735 5350 FACSIMILE 020 8735 5375

1. The first part of the document
 discusses the importance of
 maintaining accurate records
 and the role of the
 auditor in this process.

Site photographs

April 2008

3 of 3

Location

THE FURNITURE CAVE,
533 KINGS ROAD,
LONDON SW10.



View of rear elevation of Furniture Cave from Westfield Park, February 2008

EX DIR	HDC	TP	CAC	AD	CLU	AO AK
R.B. K.C.	13 JUN 2008				PLANNING	
N	C	S		APP	IO	REC
HBS				ARB	FPLN	DES FEES



View of rear elevation of Furniture Cave from Tetcott Road, February 2008

View of rear elevation of Furniture Cave from Westfield Park, February 2008



View of rear elevation of Furniture Cave from Tetcott Road, February 2008

View of rear elevation of Furniture Cave from Tetcott Road, February 2008

ADAMS + COLLINGWOOD ARCHITECTS

BULWER YARD, 27 BULWER STREET, LONDON, W12 8AR

E-MAIL info@adamscollingwood.com TELEPHONE 020 8735 5350 FACSIMILE 020 8735 5375



DO NOT SCALE OFF THIS DRAWING



EX DIR	HDC	TP	CAC	AD	CLU	AO
						AK
R.B.		13 JUN 2008			PLANNING	
K.C.						
N	C	S		APP	IO	REC
HBS			ARB	FPLN	DES	FEE

KEY

- LOCATION OF SITE
- BUILDING TO BE DEMOLISHED



9 Crown Copyright. All rights reserved. Licence no. 10001998

Revisions		
Client FURNITURE CAVE		
Job Title THE FURNITURE CAVE 533 KINGS ROAD LONDON SW10		
Drawing name	Code	
SITE LOCATION PLAN		
Scale 1: 1250	Date drawn JUNE 2008	A3
Drawn by AU	Drawing size	
Job number 530	Drawing number SKI00.	Revision
ADAMS + COLLINGWOOD ARCHITECTS BULWER YARD, 27 BULWER STREET, LONDON, W12 8AR		
E-MAIL: info@adamscollingwood.com TELEPHONE: 020 8735 5350 FACSIMILE: 020 8735 5375		
DO NOT SCALE OFF THIS DRAWING - ALL DIMENSIONS TO BE CHECKED ON SITE		

