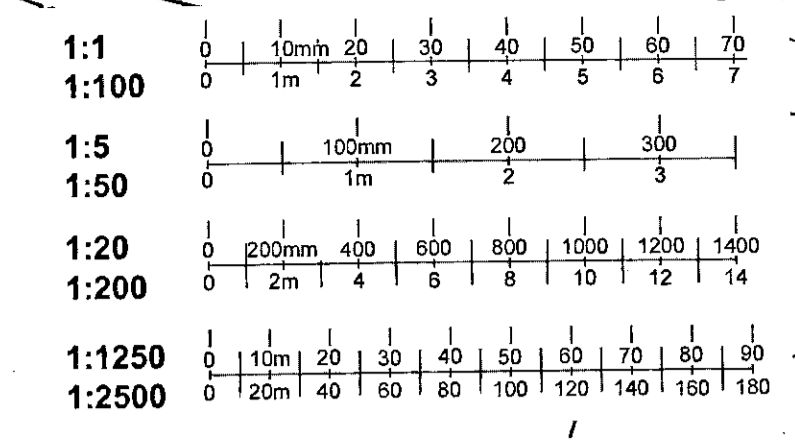
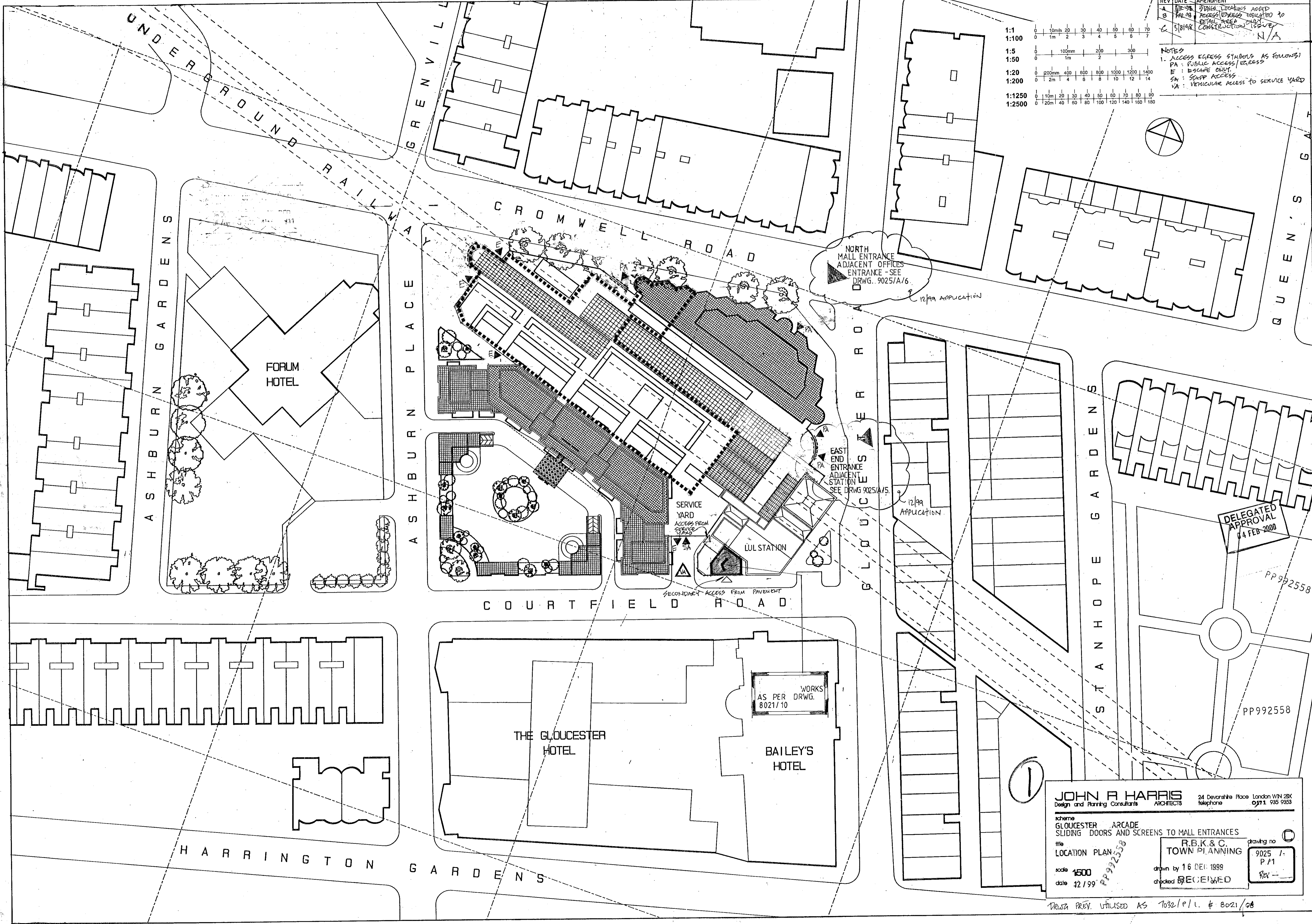


REV	DATE	AMENDMENT
A	12/99	STAIRS LOCATIONS ADDED
B	12/99	ACCESS SYMBOLS INDICATED TO RETAIL TRADE CONSTRUCTION ISSUE
C	12/99	N/A



NOTES
 1. ACCESS SYMBOLS AS FOLLOWS:
 PA: PUBLIC ACCESS/EGRESS
 E: ESCAPE ONLY
 SA: STAFF ACCESS
 VA: VEHICULAR ACCESS TO SERVICE YARD



NORTH MALL ENTRANCE ADJACENT OFFICES ENTRANCE - SEE DRWG. 9025/A/6.

EAST END ENTRANCE ADJACENT STATION SEE DRWG 9025/A/5.

SERVICE YARD ACCESS FROM SERVICE YARD

SECONDARY ACCESS FROM PAVEMENT

WORKS AS PER DRWG. 8021/10

DELEGATED APPROVAL 14 FEB 2000

JOHN A HARRIS
 Design and Planning Consultants ARCHITECTS
 24 Devonshire Place London W1N 2BQ
 telephone 0171 935 9383

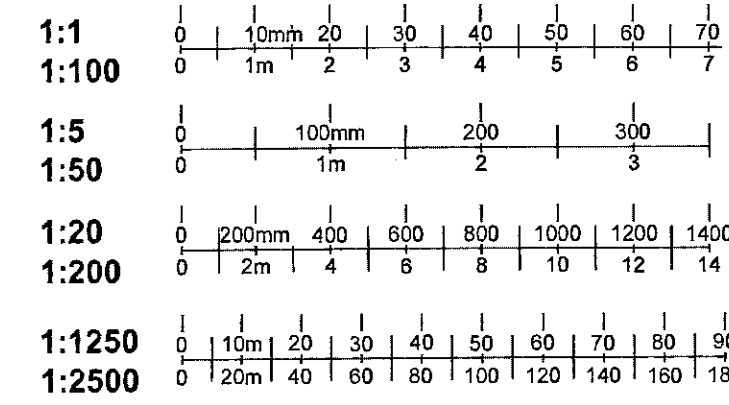
scheme: GLOUCESTER ARCADE
 SLIDING DOORS AND SCREENS TO MALL ENTRANCES

title: LOCATION PLAN
 drawing no: 9025 1- P/1

scale: 1:500
 date: 12/99

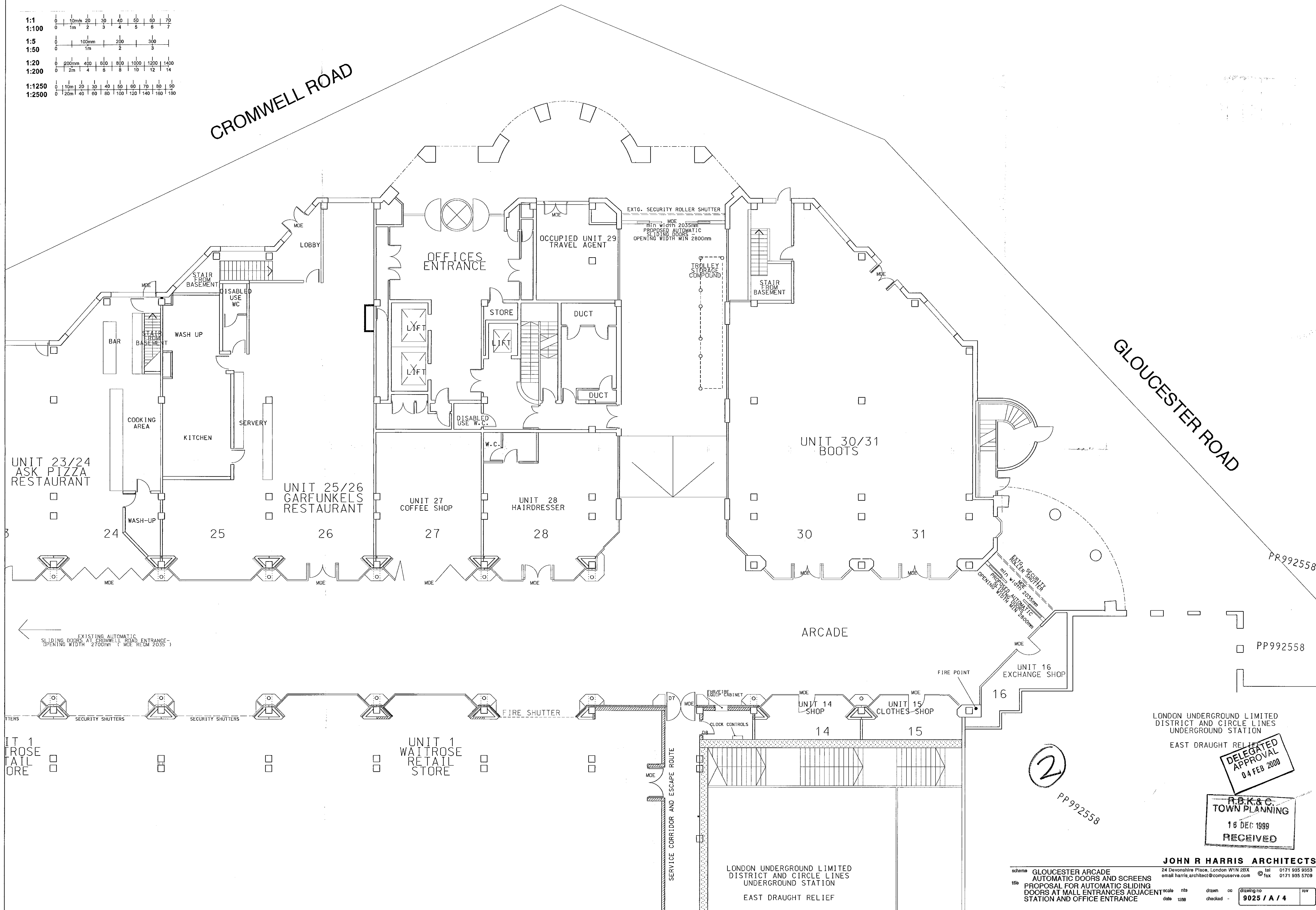
drawn by: 16 DEC 1999
 checked by: RECEIVED

DETAILED REV. UTILISED AS 7032/011. & 8021/08



CROMWELL ROAD

GLOUCESTER ROAD

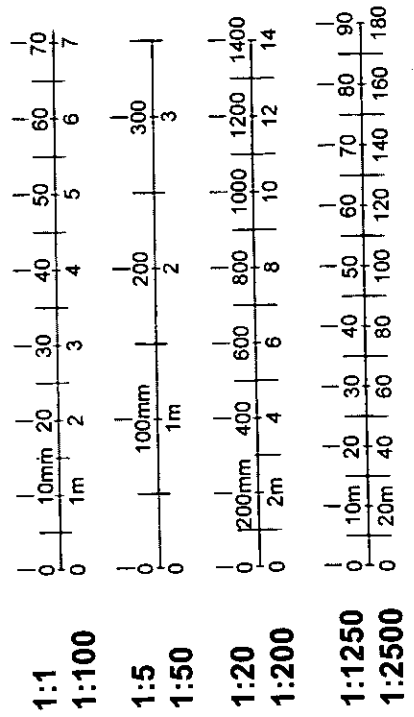


DELEGATED APPROVAL 04 FEB 2000

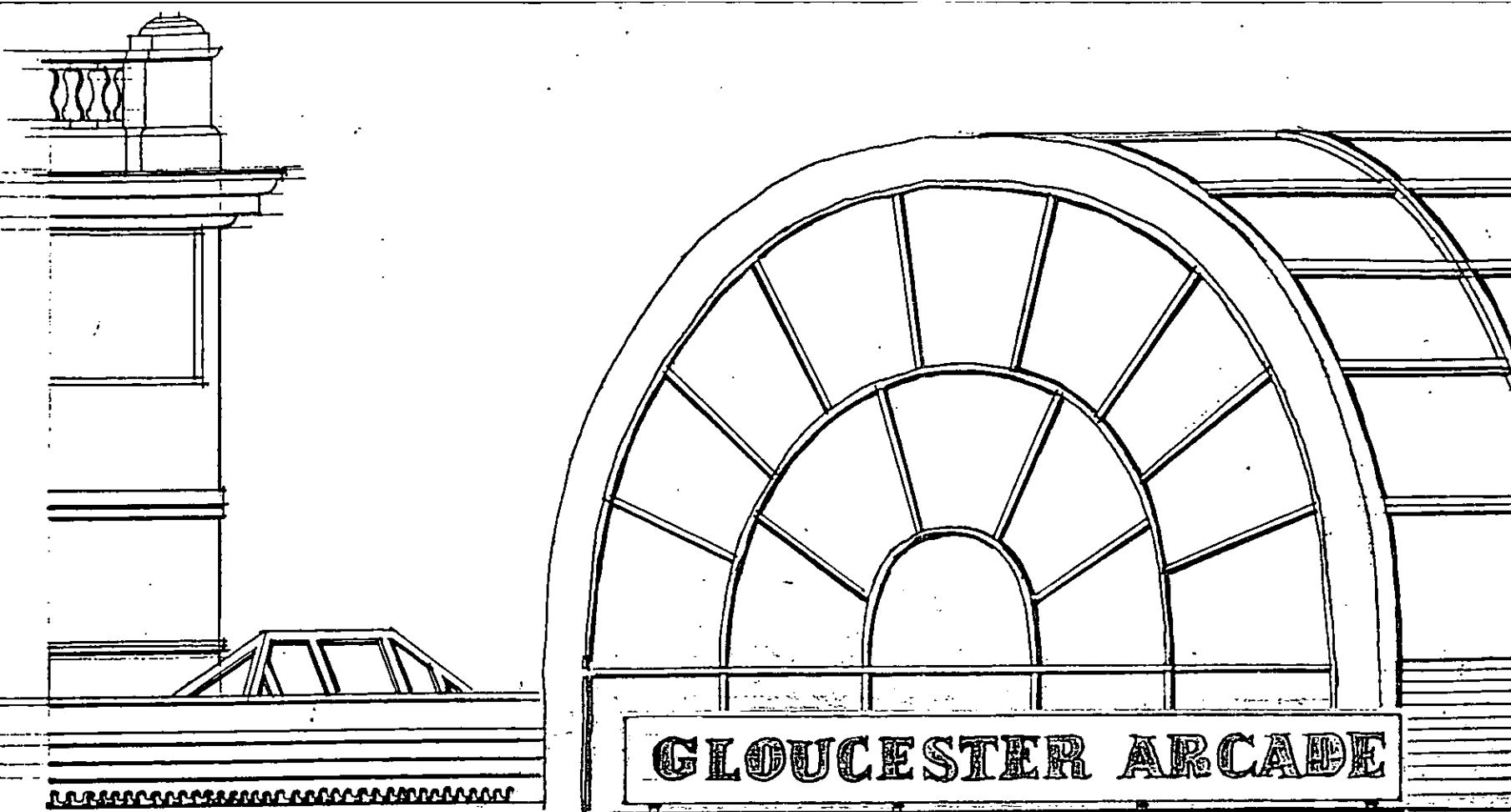
R.B.K. & C. TOWN PLANNING 18 DEC 1999 RECEIVED

JOHN R HARRIS ARCHITECTS 24 Devonshire Place, London W1N 2BX tel 0171 985 9853 email harris.architect@compuserve.com fax 0171 985 5709

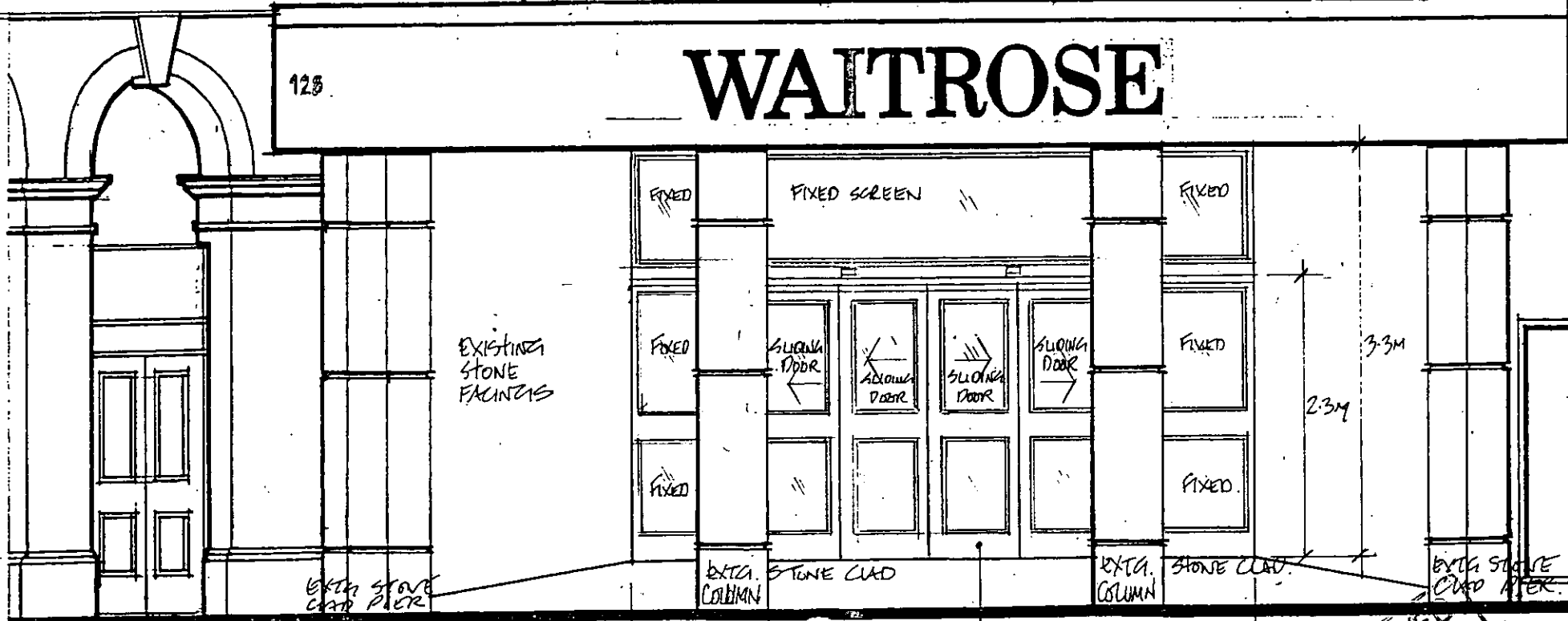
scheme	GLOUCESTER ARCADE		scale	nts	drawn	cc	drawing no	rev
title	PROPOSAL FOR AUTOMATIC SLIDING DOORS AT MALL ENTRANCES ADJACENT STATION AND OFFICE ENTRANCE		date	1299	checked	-	9025 / A / 4	



1:1
1:100
1:50
1:20
1:200
1:1250
1:2500



PP992558



PP992558

L.U.L. STATION

R.B.K. & C.
TOWN PLANNING
16 DEC 1999
RECEIVED

DELEGATED APPROVAL
PP992558
04 FEB 2000
3

JOHN R HARRIS ARCHITECTS

24 Devonshire Place London W1N 2BX tel 0171 935 9353
email harris_architect@compuserve.com fax 0171 935 5709

scheme GLOUCESTER ARCADE

title EAST ENTRANCE ELEVATION
SLIDING DOORS AND SCREEN

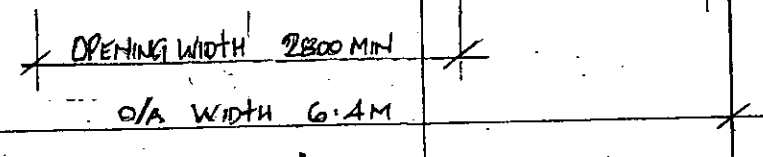
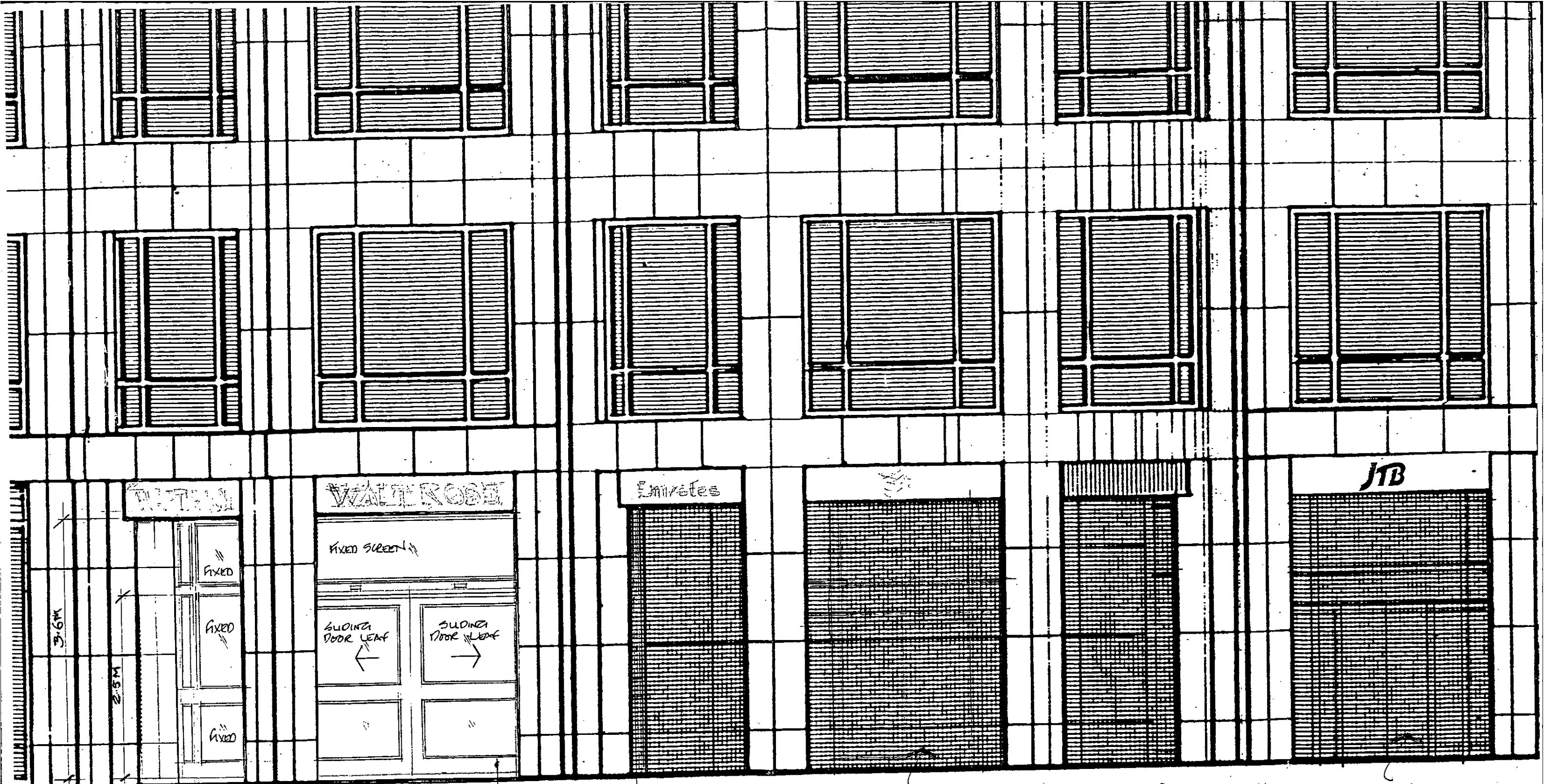
scale 1:50 drawn
date 12/99 code

drawing no. ©	rev
9025/A/5	

NEW RADAR OPERATED SLIDING ENTRANCE DOORS

NOTES: GLAZING TO BE LAMINATED GLASS
DOORS TO BE OPERATED BY OVERHEAD DOOR GEAR AND BE
FITTED WITH SAFETY FEATURES: INFRARED CURTAIN FOR PRESENCE DETECTION
MICROWAVE SENSING FIELD FOR MOTION DETECTION
DOOR FRAMES TO BE VAN DYKE BROWN IN POLYESTER POWDER COATING.

GENERAL NOTE: EXISTING SECURITY SHUTTER WILL REMAIN IN PLACE.



NEW RADAR OPERATED SLIDING ENTRANCE DOORS

NOTES: GLAZING TO BE LAMINATED GLASS
DOORS TO BE OPERATED BY OVERHEAD DOOR GEAR
AND BE FITTED WITH SAFETY FEATURES:
INFRARED CURTAIN FOR PRESENCE DETECTION
MICROWAVE SENSING FIELD FOR MOTION DETECTION
FALL SAFE OPEN ON FIRE ALARM ACTIVATION
DOOR FRAMES TO BE VAN DYKE BROWN IN POLYESTER POWDER COATING

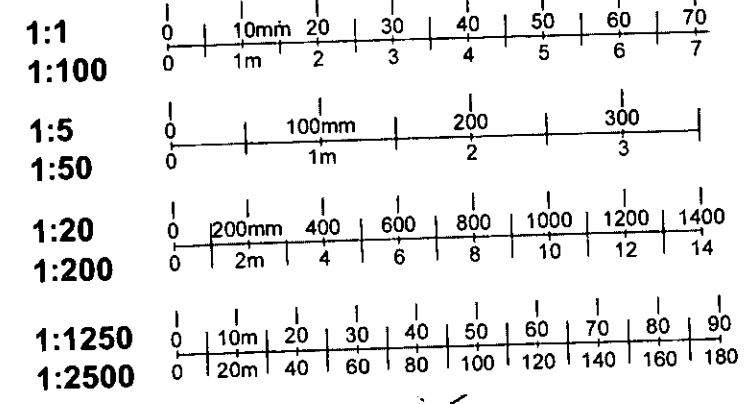
GENERAL NOTE: EXISTING SECURITY SHUTTER WILL REMAIN IN PLACE.

EXISTING ENTRANCE TO UNIT 29 / TRAVEL AGENT

EXISTING ENTRANCE TO OFFICE BUILDING

4

PP992558



JOHN R HARRIS ARCHITECTS

4 Devonshire Place London W1N 2BX
mail harris_architect@compuserve.com

cheme GLOUCESTER ARCADE

OFFICE ENTRANCE ELEVATION 16 DEC 1999
SLIDING DOORS AND SCREEN

scale 1:50
date 12/99

tel 0171-935-9353
fax 0171-935-5299
TOWN PLANNING

RECEIVED

drawing no. 9025/A/6	rev
----------------------	-----