

RECEIVED  
- 9 DEC 1999  
TOWN PLANNING  
H.B.K. & C.

DELEGATED APPROVAL  
24 MAR 2000  
SECOND FLOOR PLAN

1

PP 992503

REMOVE WC/SHOWER  
IN THIS AREA.  
ROOM 201

SELF CLOSING PD 30  
DOOR - N.B. FIRE ROOM DOOR.  
NEW STEPS UP.

UP TO 2ND FLOOR  
NEW DOOR

UP FROM  
1st Floor

UP TO  
3RD FLOOR

NEW WORKS SHOWN IN RED

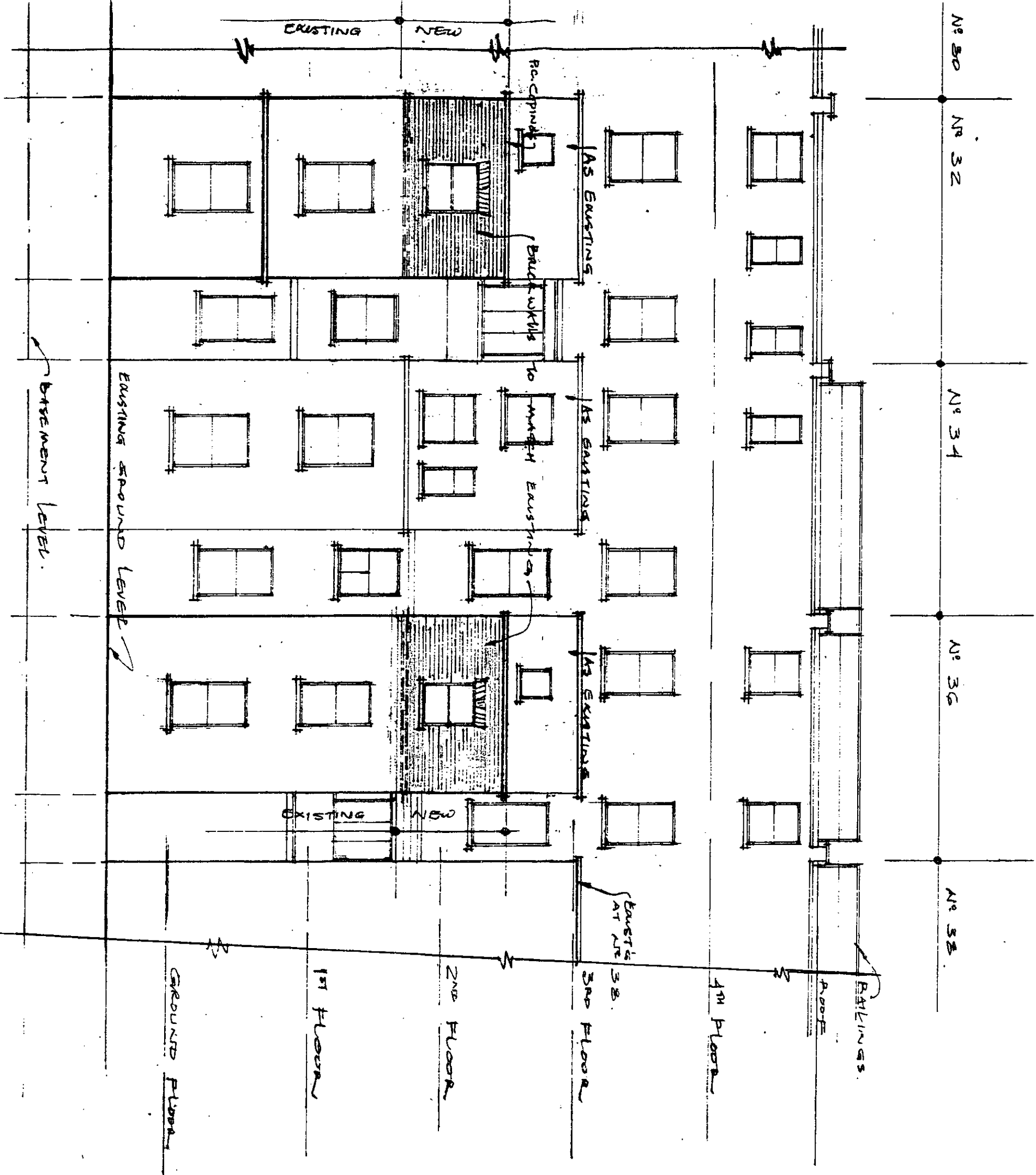
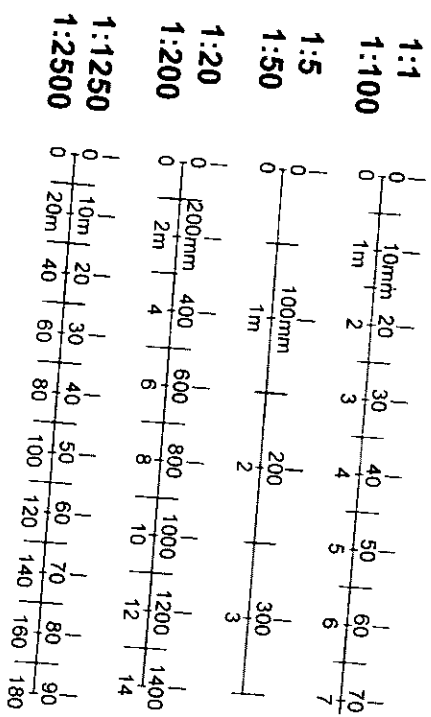
DEMOLITION WORKS: YELLOW

REAR EXTENSIONS AT 2ND FLOOR LEVEL  
RAMSEES HOTEL, 32-36 HOGARTH ROAD,  
EARLS COURT, LONDON. SW5

SCALE: 1:50

DRG. NO: HRPP/1

SHEET 1 OF 3



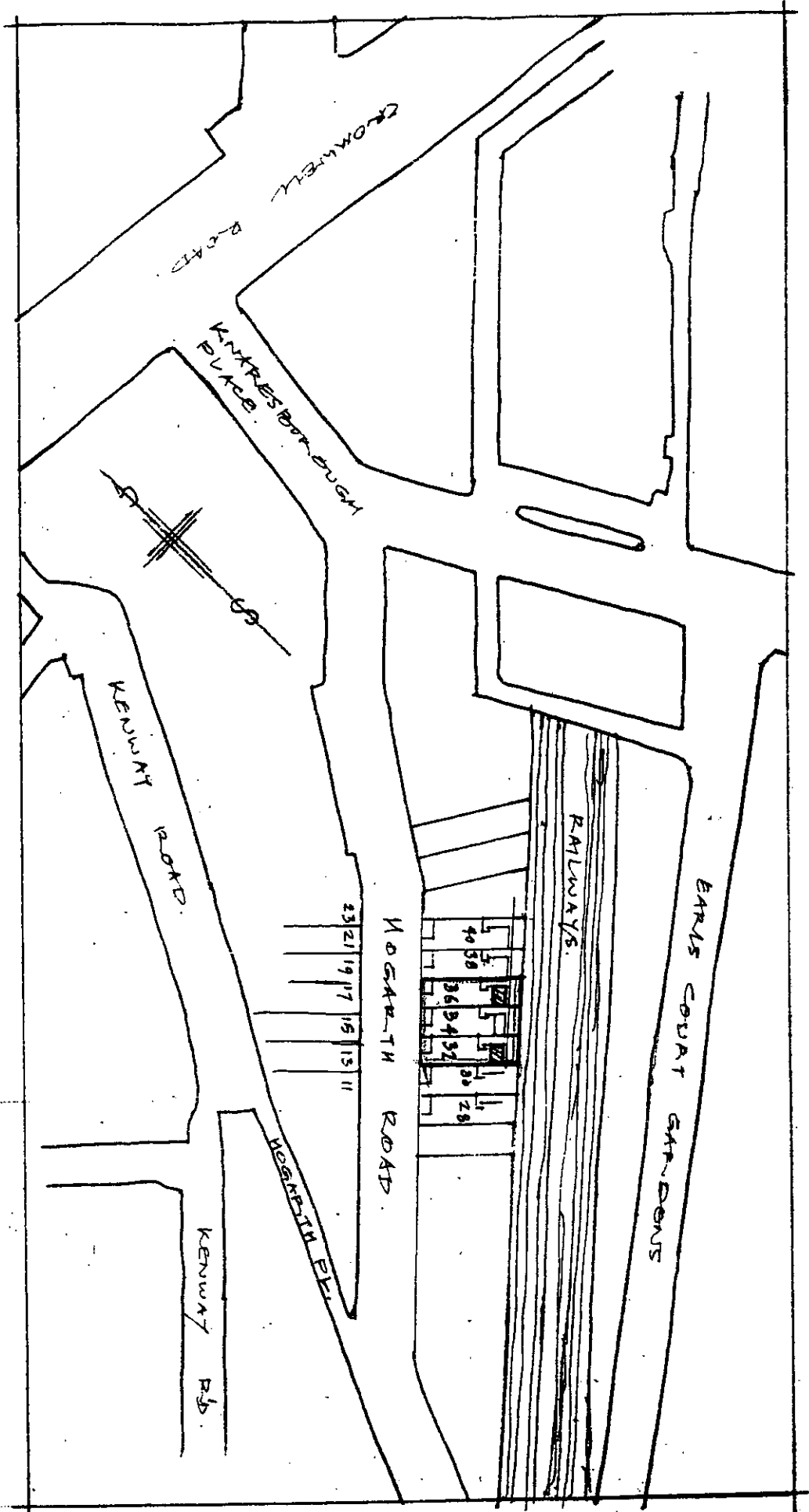
REAR ELEVATION

RECEIVED  
 - 9 DEC 1999  
 TOWN PLANNING  
 R.B.K. & C.

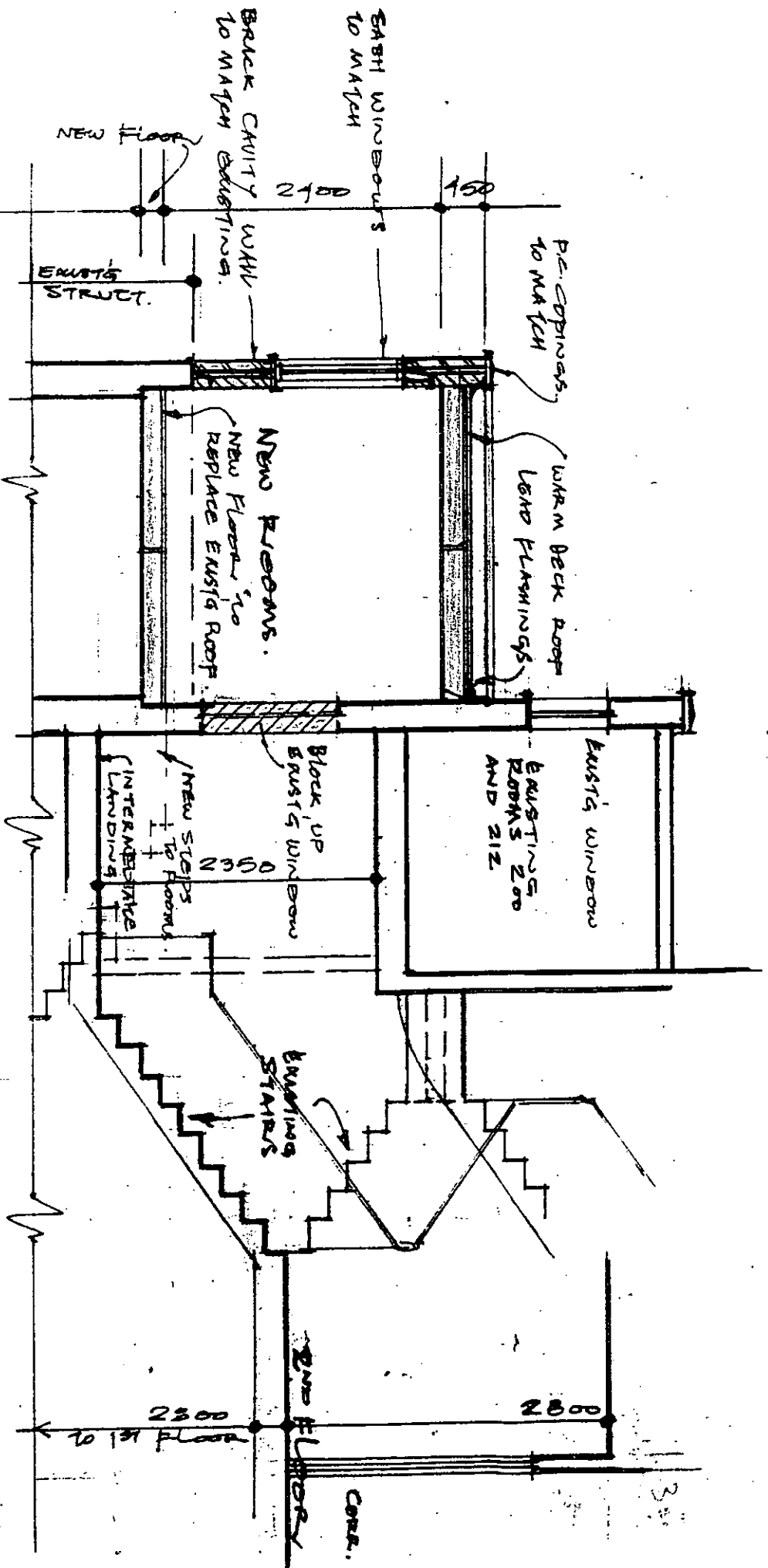
DELEGATED  
 APPROVAL  
 24 MAR 2000  
 (2)

PP 992503

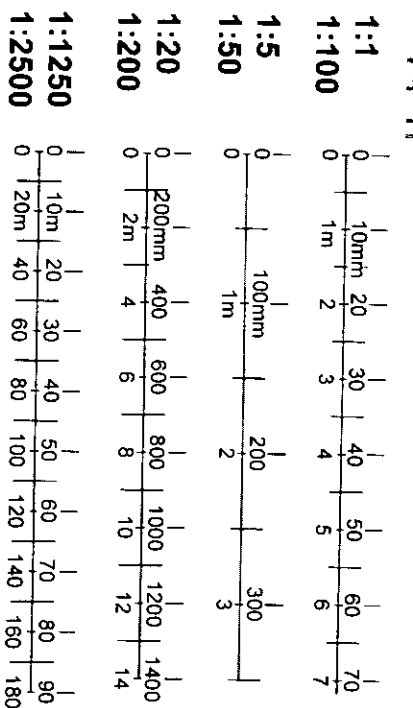
NEW WORKS SHOWN IN RED		DEMOLITION WORKS: YELLOW	
REAR EXTENSIONS AT 2 <sup>ND</sup> FLOOR LEVEL			
RAMSEES HOTEL, 32-36 HOGARTH ROAD,			
EARLS COURT, LONDON. SW5			
SCALE: 1:100	DRG. NO: HRPP/2	SHEET 2 OF 3	



SITE PLAN SCALE: 1:1250.



TYPICAL SECTION THRU NEW ROOMS.



DELEGATED APPROVAL  
24 MAR 2000

3

NEW WORKS SHOWN IN RED  
DEMOLITION WORKS: YELLOW  
REAR EXTENSIONS AT 2<sup>ND</sup> FLOOR LEVEL  
RAMSEES HOTEL, 32-36 HOGARTH ROAD,  
EARLS COURT, LONDON. SW5

SCALE: 1:50 DRG. No: HRPP/3 SHEET 3 OF 3