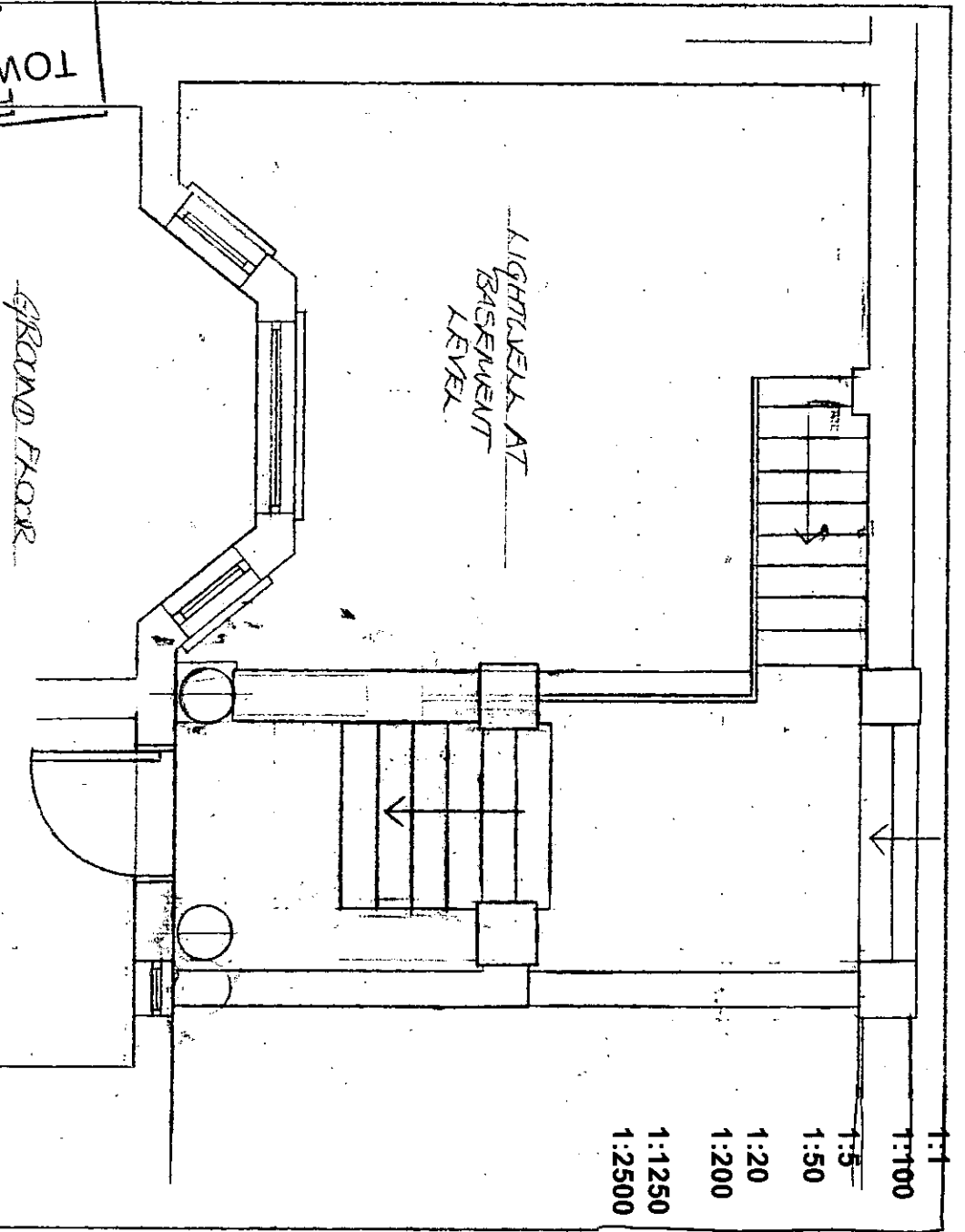
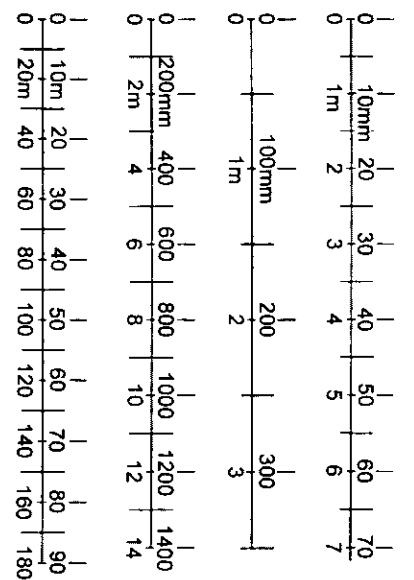


RECEIVED  
 29 DEC 1999  
 J.B.K. & C.  
 TOWN PLANNING



1:1  
 1:100  
 1:5  
 1:50  
 1:20  
 1:200  
 1:1250  
 1:2500



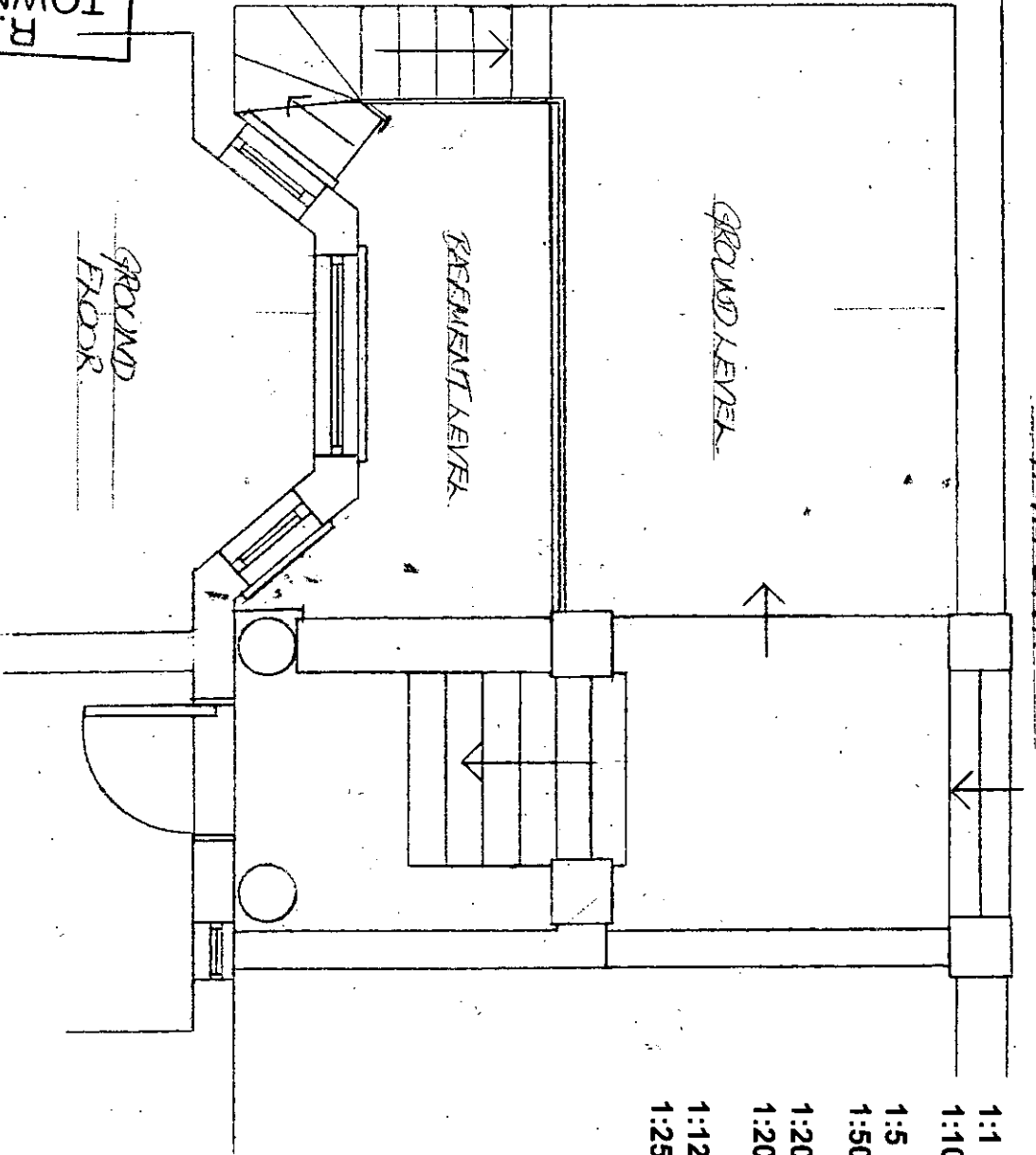
PP 992576

1

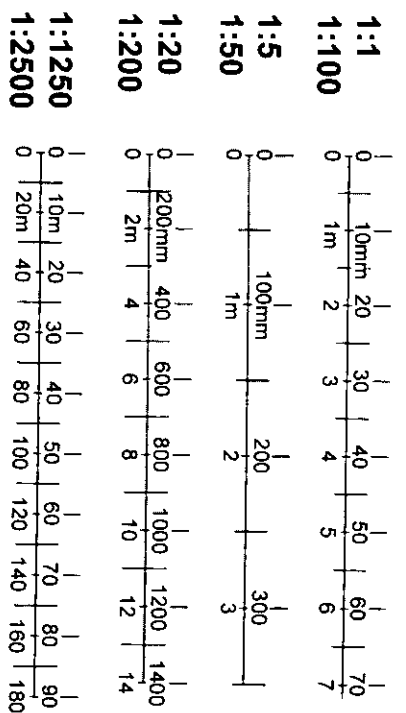
DELEGATED  
 APPROVAL  
 07 FEB 2000

<b>Francis Roos</b> Associate Limited 134 Lots Road London SW10 0RJ tel: 0207 351 9996 fax: 0207 351 5044	
JOB:	20 RUSSEL ROAD
TITLE:	LIGHTWEEL AS EXISTING
SCALE:	1:50
DATE:	13/12/99
DRWG NO:	PLAN 1

PAVEMENT

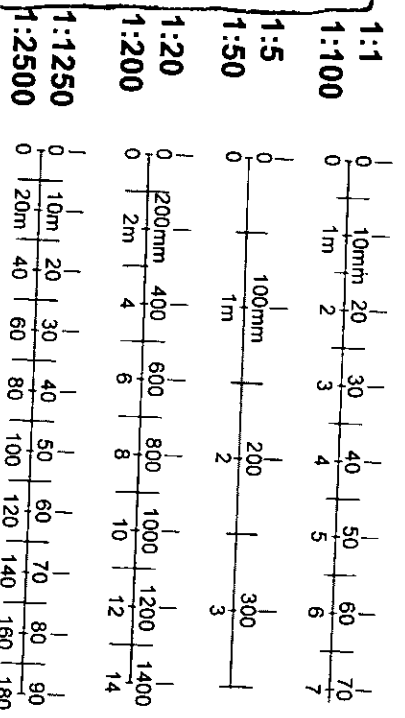
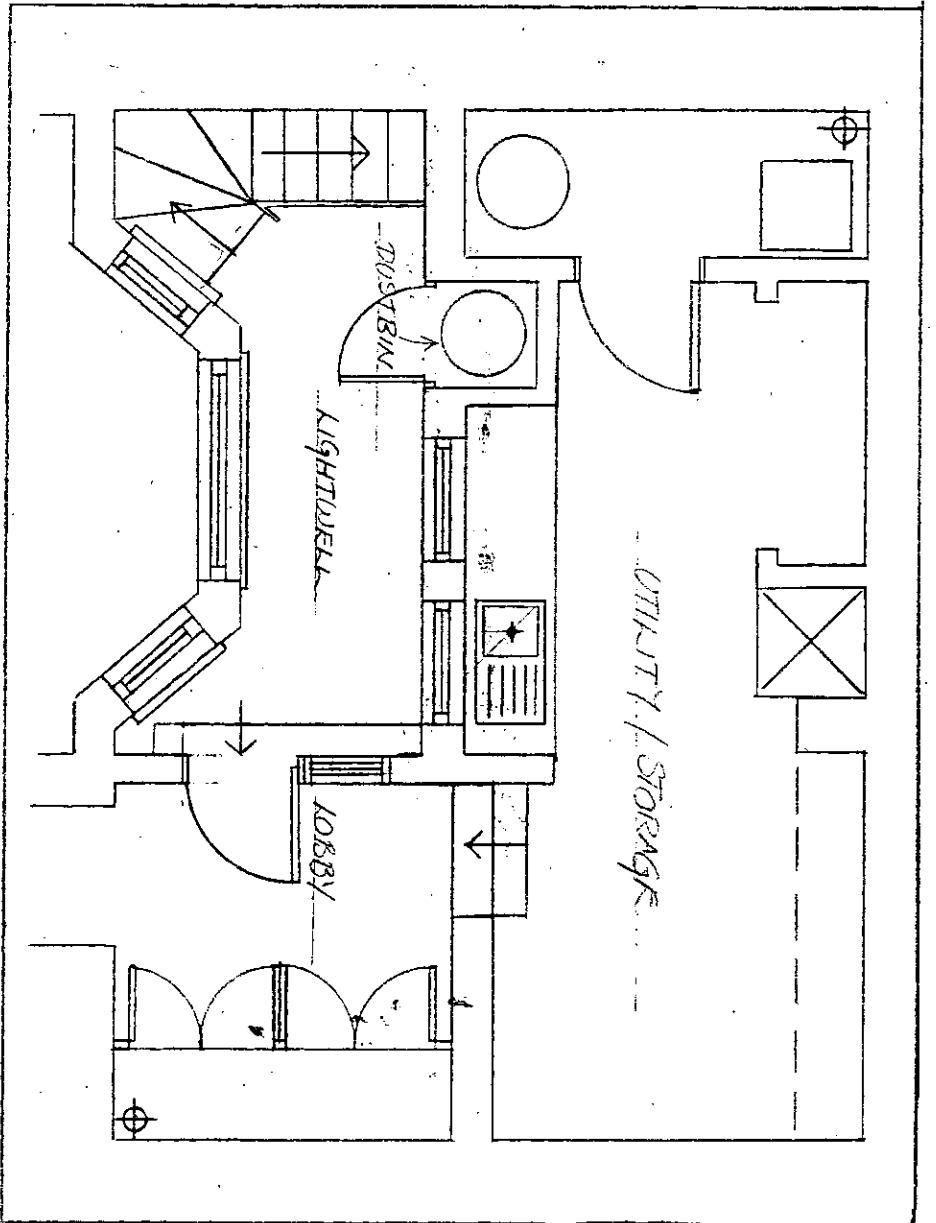


RECEIVED  
 20 DEC 1999  
 TOWN PLANNING  
 R.B.K. & C.

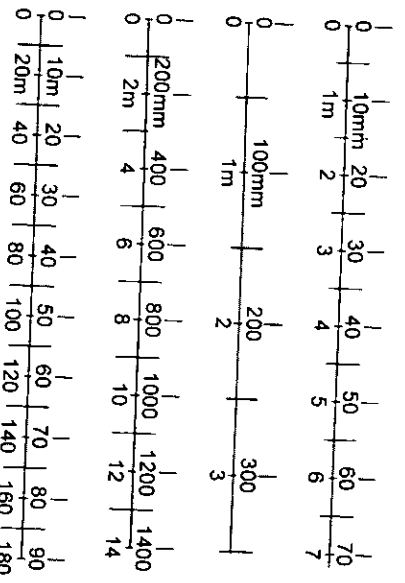


2

<b>Francis Roos</b> Associates Limited	
134 Lots Road London SW10 0RU tel: 0207 351 9996 fax: 0207 351 5044	
JOB:	20 RUSSEL ROAD
TITLE:	GROUND LEVEL AS PROPOSED
SCALE:	1:50
DATE:	13/12/99
DRWG NO:	PLAN 2



1:1  
1:100  
1:5  
1:20  
1:200  
1:1250  
1:2500



RECEIVED  
 20 DEC 1999  
 TOWN PLANNING  
 R.B.K. & C.

DELEGATED  
 APPROVAL  
 07 FEB 2000

3

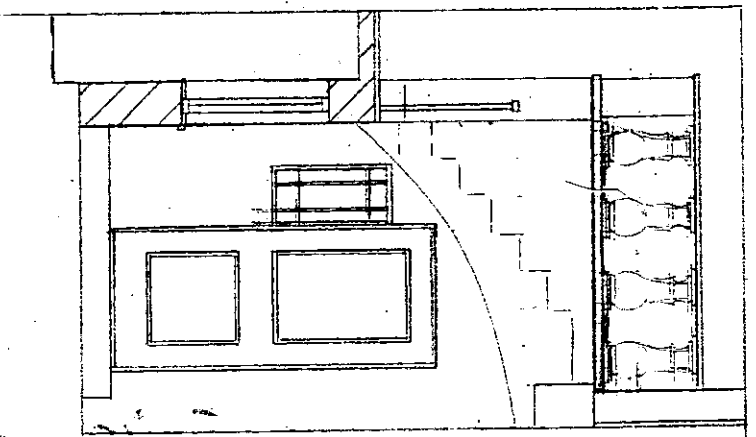
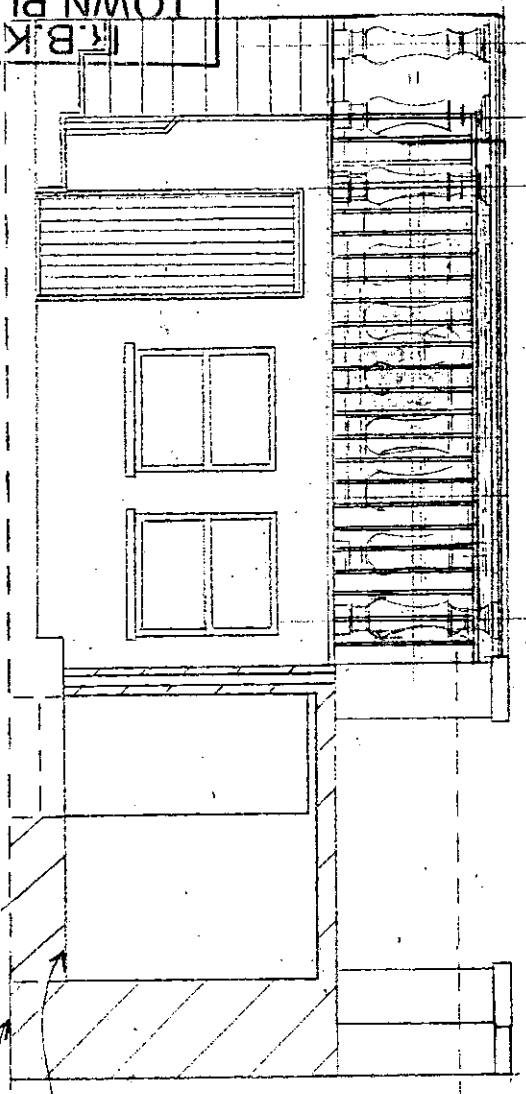
<b>Francis Roos</b> Associates Limited	
134 Lots Road London SW10 0RU tel: 0207 351 9996 fac: 0207 351 5044	
JOB:	20 ROSEKIL ROAD
TITLE:	UTILITY ROOM AS PROPOSED
SCALE:	DATE:
1:50	13/12/99
DRWG NO:	PLAN 3

RECEIVED

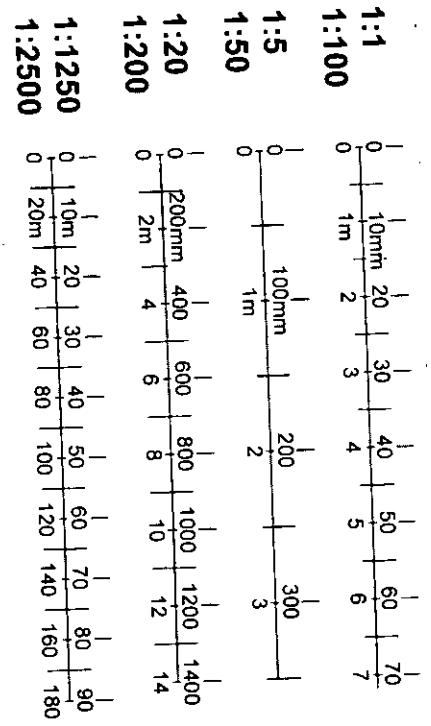
20 DEC 1999

TOWN PLANNING  
K.B.K. & C.

UTILITY ROOM.



ENTRANCE



CEILING LEVEL  
IN LOBBY

FLOOR LEVEL IN LOBBY

FLOOR LEVEL IN UTILITY.

DELEGATED  
APPROVAL  
07 FEB 2000

4

<b>Francis Roos</b> <small>Associates Limited</small>	
134 Lots Road London SW10 0RJ tel: 0207 351 9996 fax: 0207 351 5044	
JOB:	10 RUSSEL ROAD.
TITLE:	UTILITY ROOM ELEVATIONS
SCALE:	DATE:
1:50	13/12/99
DRWG NO:	ELEVATIONS 4/5