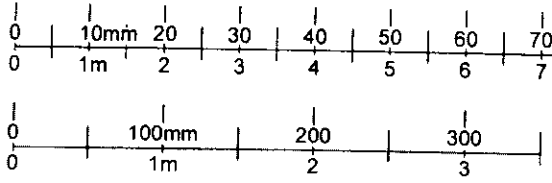
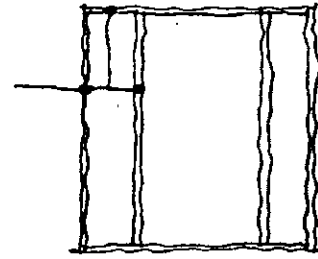


1:1
1:100
1:5
1:50

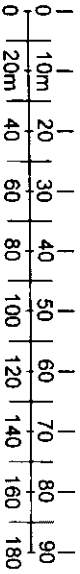


75 x 75
MM M/S
FRAME
ANGLES

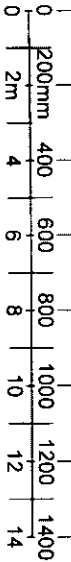


FIXED SCREEN

1:1250
1:2500



1:200

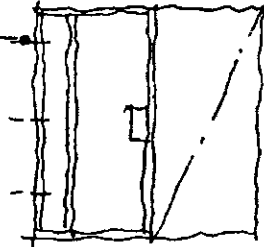


ESPANGOLETTES
LOCK BRACKET



SCREEN FIXINGS
FROM REAR

INTERNAL
HINGE

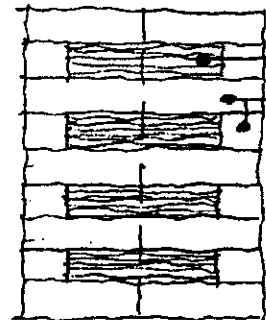


HINGED SCREEN

ESPANGOLETTES
LOCK

20 x 20 MM ANGLE:
WELDED TO MESH S/S

75 x 75
M/S ANGLE

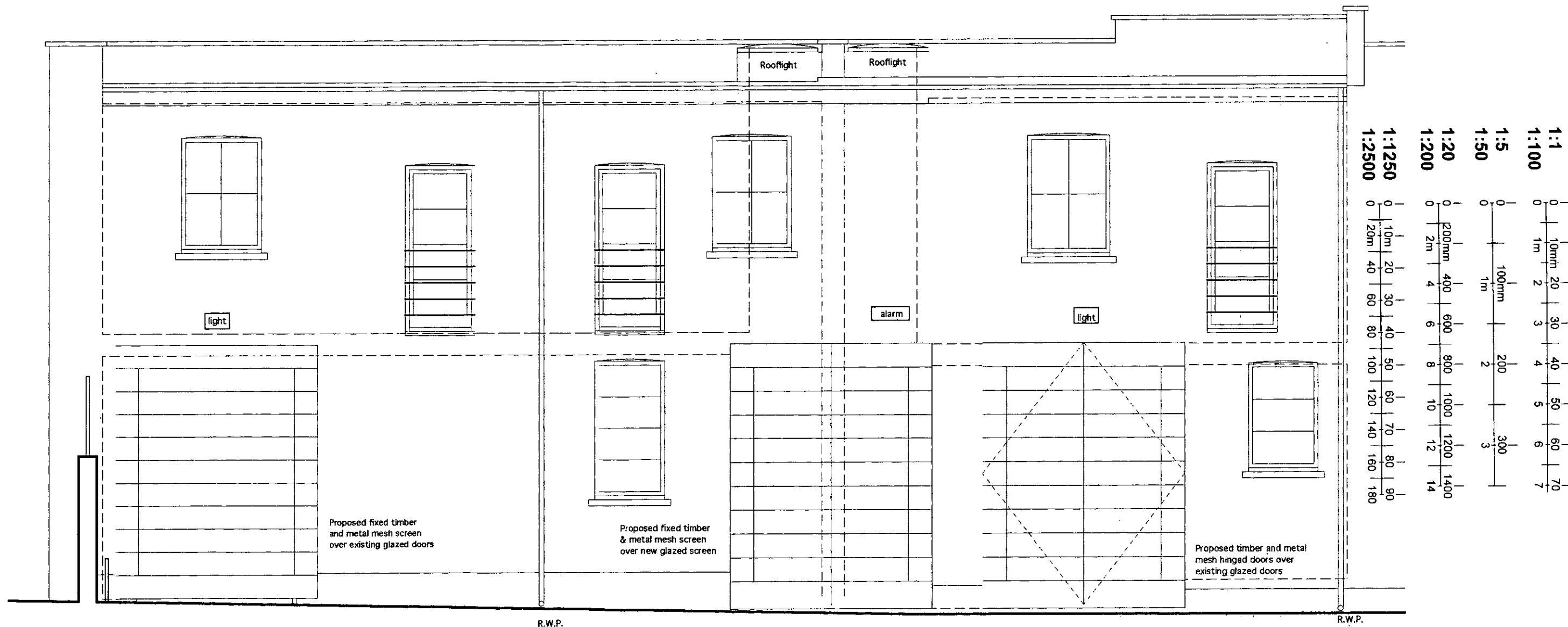


MESH
TIMBER

TYPICAL ELEVATION

HINGED DOORS - 1 NO S/S ESPANGOLETTES
LOCK
3 NO S/S HINGES
FIXED SCREEN - 6 NO M/S BRACKETS
CONCEALED BEHIND
FRAME

16



FRONT ELEVATION

ANSLEIGH PLACE

Private House Conversion

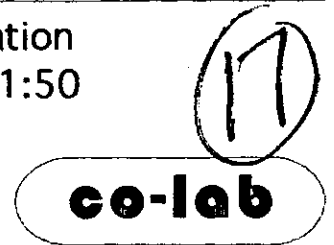
Alexander P.Coe

Notes
 Do not scale. All figured dimensions to be checked on site.
 Copyright of the design and/or drawing remains solely with co-lab.

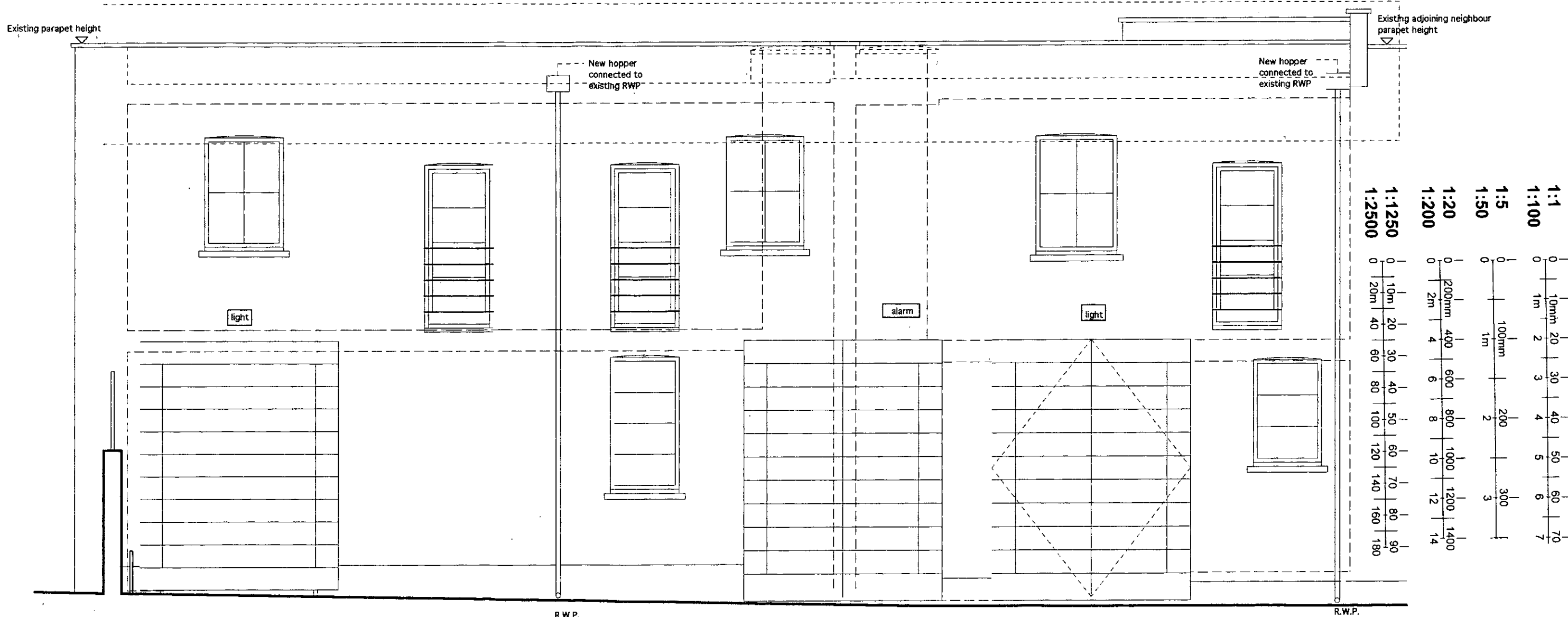
TOWN PLANNING
 12 JUL 2001
 RECEIVED

Drawing Proposed Front Elevation
 as Planning Consent 1:50

Date 24.7.99 Rev. E (30.07.00)
 Drg. no. AP(20)021A



New 450mm high brick parapet wall to front elevation match adjoining neighbours parapet. Brckwork and conc. coping to match existing elevation.



FRONT ELEVATION

ANSLEIGH PLACE

18

Private House Conversion

TOWN PLANNING

Alexander P.Coe

Notes
Do not scale. All figured dimensions to be checked on site.
Copyright of the design and/or drawing remains solely with co-lab.

12 JUL 2001
RECEIVED

Drawing Proposed Front Elevation
with new parapet. 1:50

Date 24.7.99 Rev. F (03.07.01)
Drg. no. AP(20)021B

