

8000



19. ET REF 2/2/9916/30.5.99
Looking northwards up Campden Hill Road.
Terrace, on the west side, of three storey brick
and stucco houses with Tuscan fenestration.
Some forest trees in front gardens.

8001

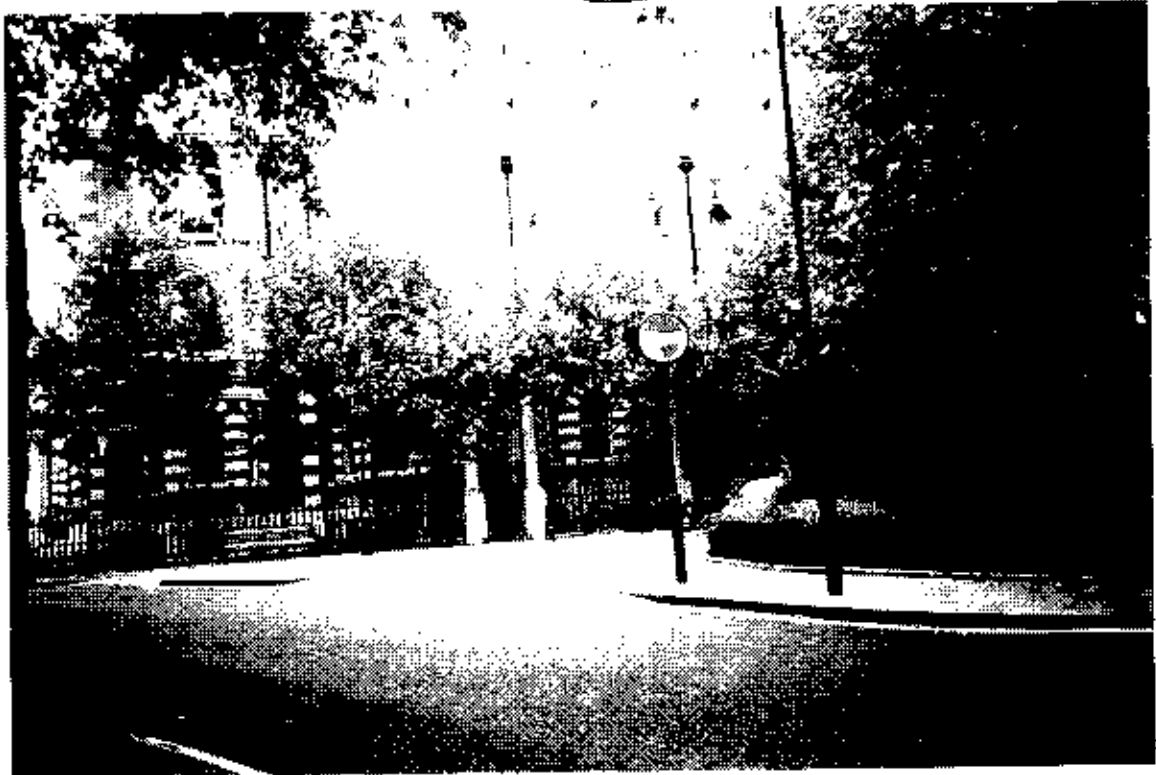
652



20. RI REF 4/2/9916/30.5.99
Eastern side of Campden Hill Road. Council
Offices designed by Sir Basil Spence. New planting
and existing trees mask this tall, red brick building.

8002

(CAB)



21. RT RIF 6/2/9916/30.5.99
Observatory Gardens. French style 1883 'opulent'
terrace of town houses. Three-and-a-half storey, plus
two additional storeys behind roof-top balustrade.
Note: tree-lined street and pleasant landscaped 'square'.

2003



22. RT REF 7/2/9916/30.5.99
Looking up Campden Hill Road, just south of
Campden Hill. Trunks and foliage of forest
trees mask Kensington Heights and Appeal Site.

2004



23. RT REF 11/2/9916/30.5.99
At junction with Campden Hill. Appeal site
partially masked by trunks of forest trees.



24. RT REF 8/2/9916/30.5.99
Block of modern three storey flats in Sheffield
Terrace, with views onto private landscaped square.

8006



25. RT REF 9/2/9916/30.5.99
Airlie Gardens, Campden Hill Road. Tall six
storey gabled houses by Spencer Chadwick, 1878.
Appeal site masked by summer foliage.

80057



26. RT REF 9A/9916/30.5.99
Airlie Gardens. Looking north-west towards
Appeal Site. Boundary wall and chicken-wire
above surrounding reservoir site, masked by
forest trees, beyond gate to Holland Park School.



27. RT REF 12/2/9916/30.5.99
From junction with Airlie Gardens. Cannot
see Appeal Site. Masked by Kensington Heights.

8009

~~1000~~



28. RT REF 13/2/99 16:30.5.99
From South West corner of Bedford Gardens. Appeal
Site masked by Kensington Heights and forest trees.

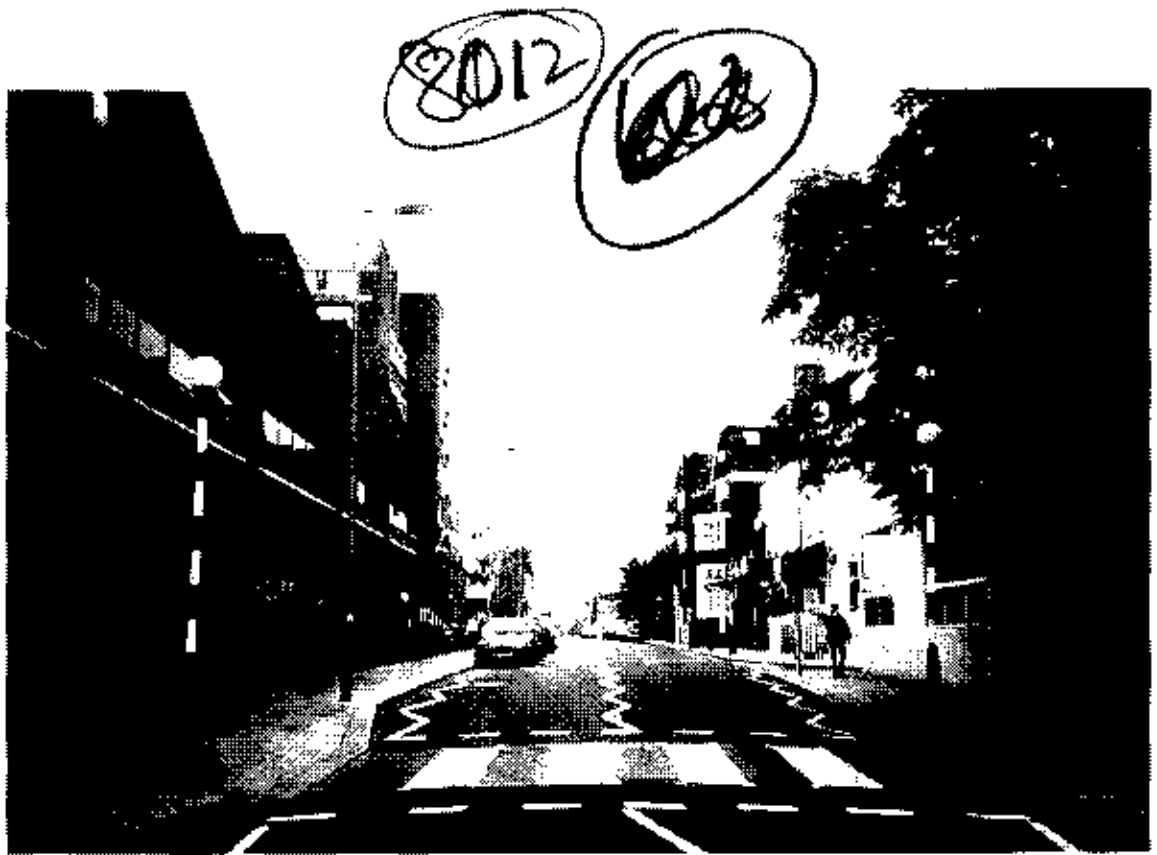


29. RT REF 14/2/99/16:30.5.99
From 20 yards down Bedford Gardens.
Appeal Site masked by The Mount, luxury
flats by Douglas Stephen & Partners, 1961-4.

8011



30. BT REF 21/2/9916/30.5.99
View of tall red brick block - Kensington Heights
from Airlie House, looking North East.



31. RT REF 22/2/9916/30.5.99
From centre of Campden Hill Road, at junction with
Airlie Gardens, Kensington Heights to west (left),
and can just see Appeal Site beyond.

8013



32. RT REF 23/2/9916/30.5.99
From junction with Campden Street, looking north west.
Appeal site seen beyond tall seven storey Kensington Heights.

8014



33. RT REF 24/2/9916/30.5.99
Kensington Heights seen from doorway of modern block of flats in Campden Street, (The Mount). Appeal Site not visible.

80B



34. RT REF 25/2/9916/30.5.99
Looking south west from southern corner of Appeal Site, to
The Windsor Castle. Two storey 'historic' P.H. (but not listed).

8016

[Handwritten signature]



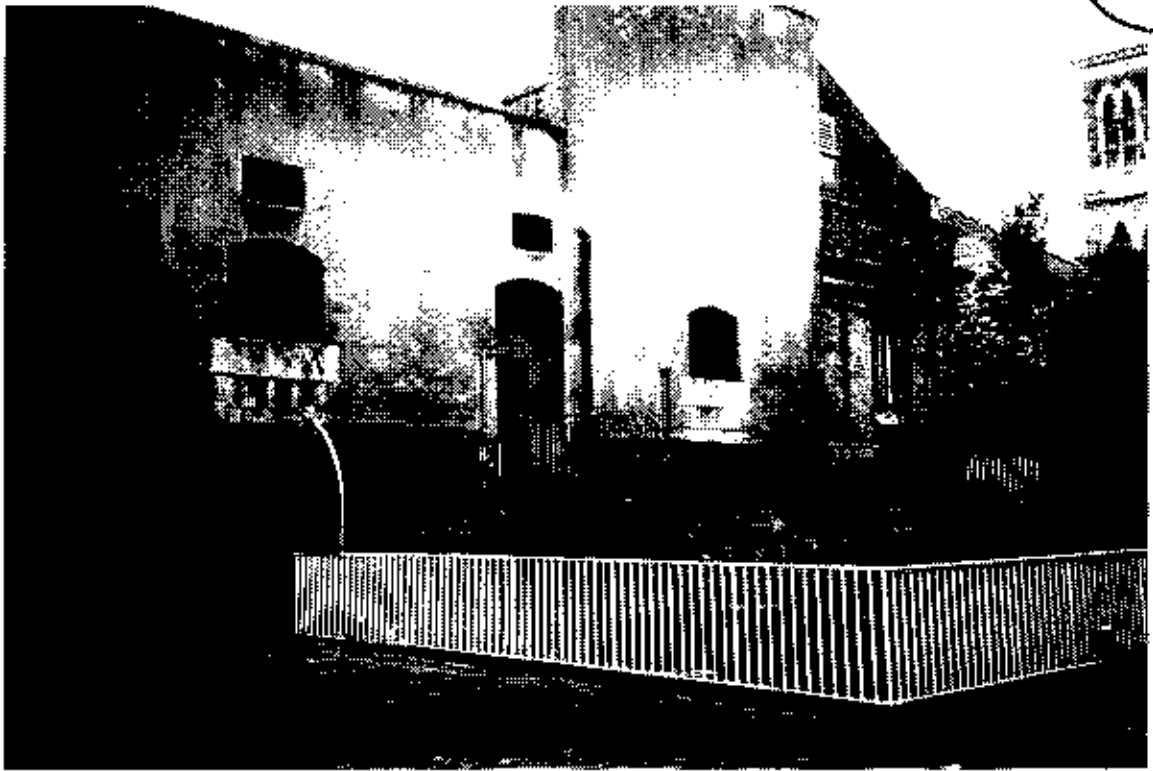
35. RE RPT 1/3/9916/30.5.99
Looking east from Appeal Site to No. 118
Camden Hill Road, tall, much altered
Norman Shaw house of 1876, listed Grade II.



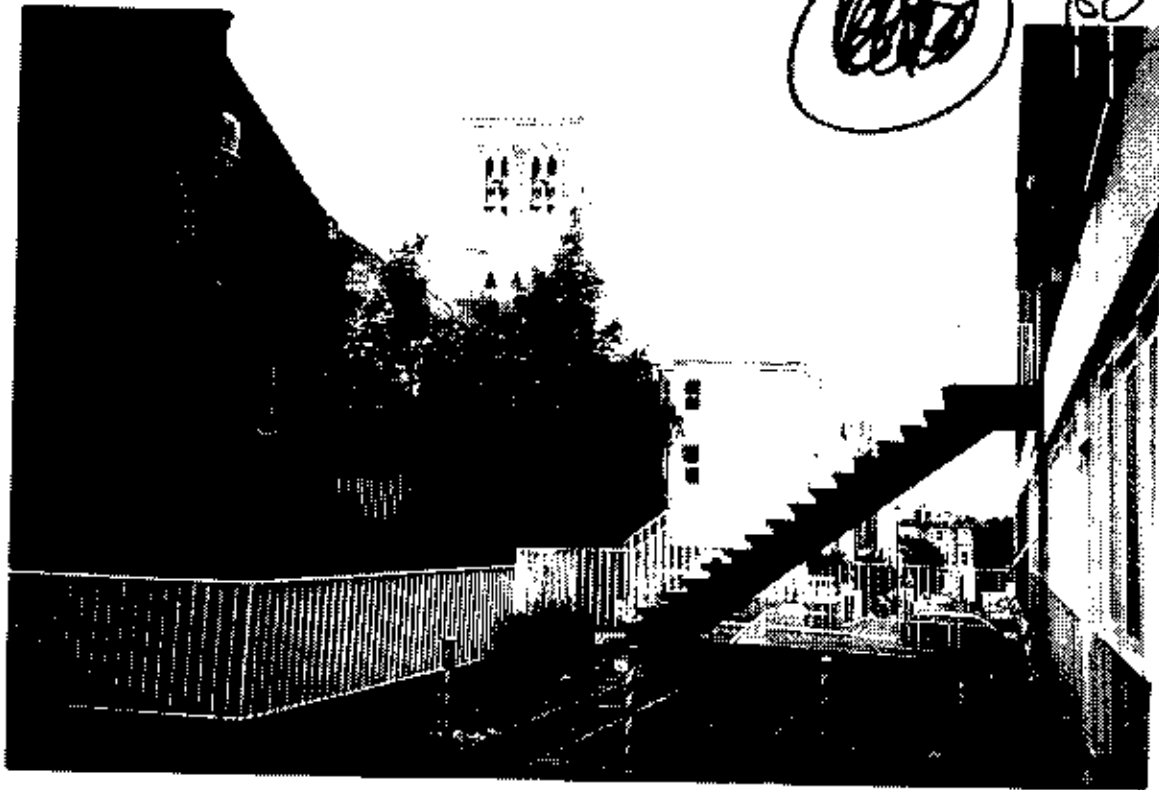
36. R1 REF 2, 314/3/9916/30.5.99
Panorama, looking across 'Works' area of Appeal Site
to back of old Pump House and escape staircases, with
tower of St George's Aubrey Wall, and side of Campden
Hill Gardens house, (with two blank windows), beyond.

8018

GB



36 A.



8019

8019

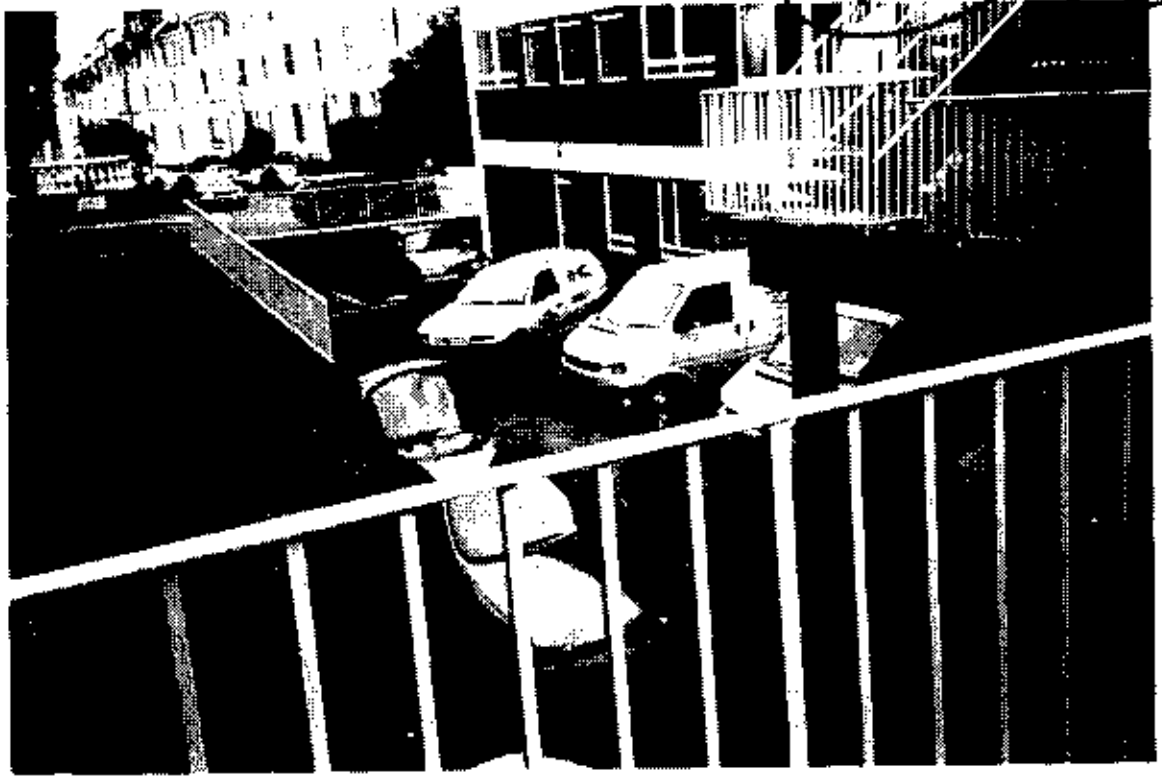
8019

8020

1/2/99



37. RT REF 5/3/99 16/30.5.99
From Appeal Site, looking due north, along
exit road, towards Camden Hill Gardens.



38. RI REF 6/3/9916/30.5.99
Works cars parked in Works Area of Appeal Site at back
of Water Tower House.



39. RT REF 8/3/9916/30.5.99
From entrance to Kensington Heights access road.
Can just see tennis player on court.



40. RT REF 9/3/9916/30.5.99
From outside No. 118 Campden Hill Road, looking west.
Side entrance to Kensington Heights and Water Tower House.



41. R1 REF 11/3/9916/30.5.99
Looking down Kensington Place, from corner of
Campden Hill Road and Melbourne House.



8025

118

42. RT REF 17/3/9916/30,5,99
Looking north west up Peel Street, through gap between
Kensington Heights and 118, Camden Hill Road.



43. RI REF 18/3/9916/30.5.99
From Appeal Site, looking north-east to Melbourne
House, red brick block of offices and flats, well
-landscaped, and covered with virginia creeper.



44-46. RT REF 19, 20 + 21/3/9916/30,5,99
Landscaped car park 'Square' at rear of Melbourne House,
Panorama of red brick four storey houses in Kensington Place, ten
storey Palmerston House, and tall Victorian flats in Peel Street.



45



46



47. RT REF 21/3/9916/30.5.99
View over Melbourne House private Car Park to 'Campden
Houses' seven storey Victorian flats in Peel Street.

~~8031~~ 8031



48. R1 REF 22/3/9916/30.5.99
Looking northwards down Camden Hill
Gardens from Appeal Site.

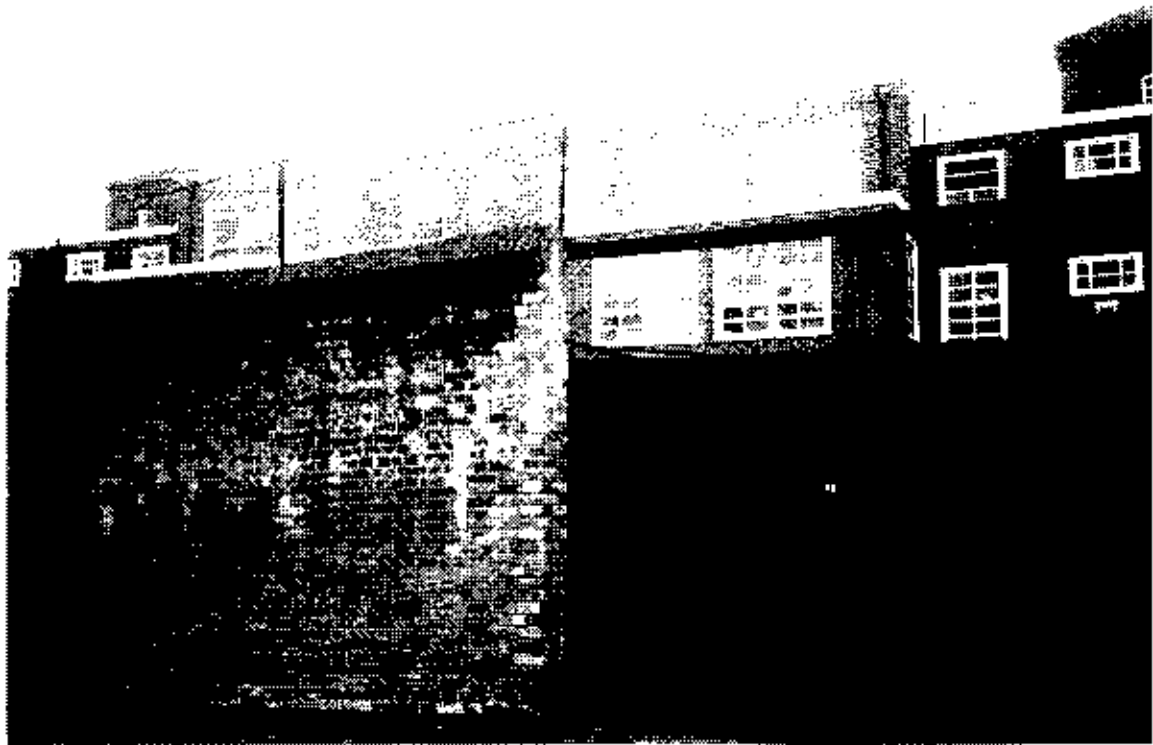
0118 8032



42. RT REF 243 9916/30,5,99
From Appeal Site, corner of No. 36, looking down Kensington Place, with 1960's Notting Hill Flats beyond, and Melbourne House to the east.

[Handwritten scribble]

8033



50. REF 16-9916/16-99
Fox Primary School in Kensington Place.



51. RT REF 2/6/9916/L6.99
Looking west in Kensington Place. Note height of
Palmerston House, Melbourne House, and Church Tower.



52. RT REF 3/6/9916/1.6.99
Modern house: 23, Kensington Place
by Tom Koy, 1966 (See Pevsner 1991, pp 507-8)

(A) (8036)



55. RT REF 7/1/9916/9.5.99
Entrance to Aubrey House at
western end of Aubrey Walk.

8637



54. RT REF 14/9916/30.5.99
 15-19 (odd) Aubrey Walk, listed Grade II, from west to east.
 South Side: Raymond Erith block of neo-classical stock brick
 three storey houses, set back from road, with car parking facilities.
 Ian Nairn says "... This is unlike any other neo-Georgian building
 in London and is worth a special visit. It shows up the fussy modernity
 of the houses opposite, something I wish I did not have to admit."



SS. RT REF 24/9916/30,5,99
North Side: 46-50 (even) Aubrey Walk. Block of three
modern terraced houses. 'Span' type but with 'Georgian'
garage doors. Car-parking facilities.



56. RT REF 34/9916/30,5,99
North Side: Nos 44 and 42 Aubrey Walk. Built on site of
large family houses in Camden Hill Square. Recently
modernised. Small forecourts for parking.



57. RT REF 4/4/9916/30,5,99
South Side: Three storey modern block of flats, 13 Aubrey Walk,
Jennis Courts beyond. No car-parking facilities. Not in Appeal Site.



58. RT REF 5/4/9916/30.5.99
South Side: Two storey terraced houses. Nos 9 and 11 Aubrey Walk with Tennis Club House and stairway entrance in easternmost end house. Forest tree in garden. No car-parking facilities.

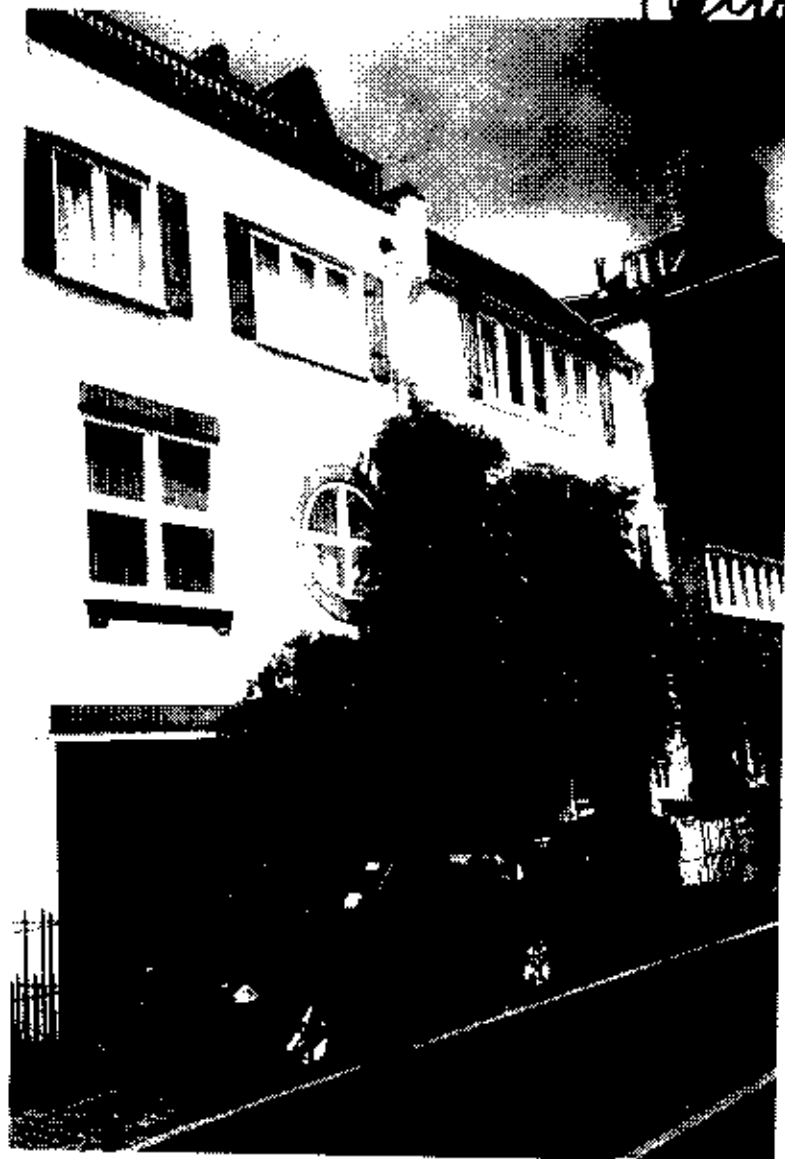
8042



59. RT REF 64-9916, 30, 5, 92
North Side; No. 40. Three storey modern brick house,
with large 'Crittall' windows. Minimal car-parking facilities.



60. RI REF 74-9916/30,5,99
North Side: Nos. 38 and 36. Former news buildings,
now with Dutch gable. No car-parking facilities.



61. RT REF 8/4:9916:30.5.99
North Side, Nos. 34 and 32. Former mews buildings.
Now stuccoed with new windows with shutters and parapet.
Garage: note parking on cobbled side walk.

8045

W. 11th St.



62. RE REF 9/4/99 16:30.5.99
North Side. No. 30. Mews building, now
pebble-dashed, with new windows and front door.
Parking on cobbled side-walk.



10/11/16

8046

63. RT REF 10/4/9916/30.5.99
Nos. 28, 26, and 24, and view continuing up the street.
Site of former news buildings. No. 28 now four storey.
With garage, and cobbled forecourt only for parking.

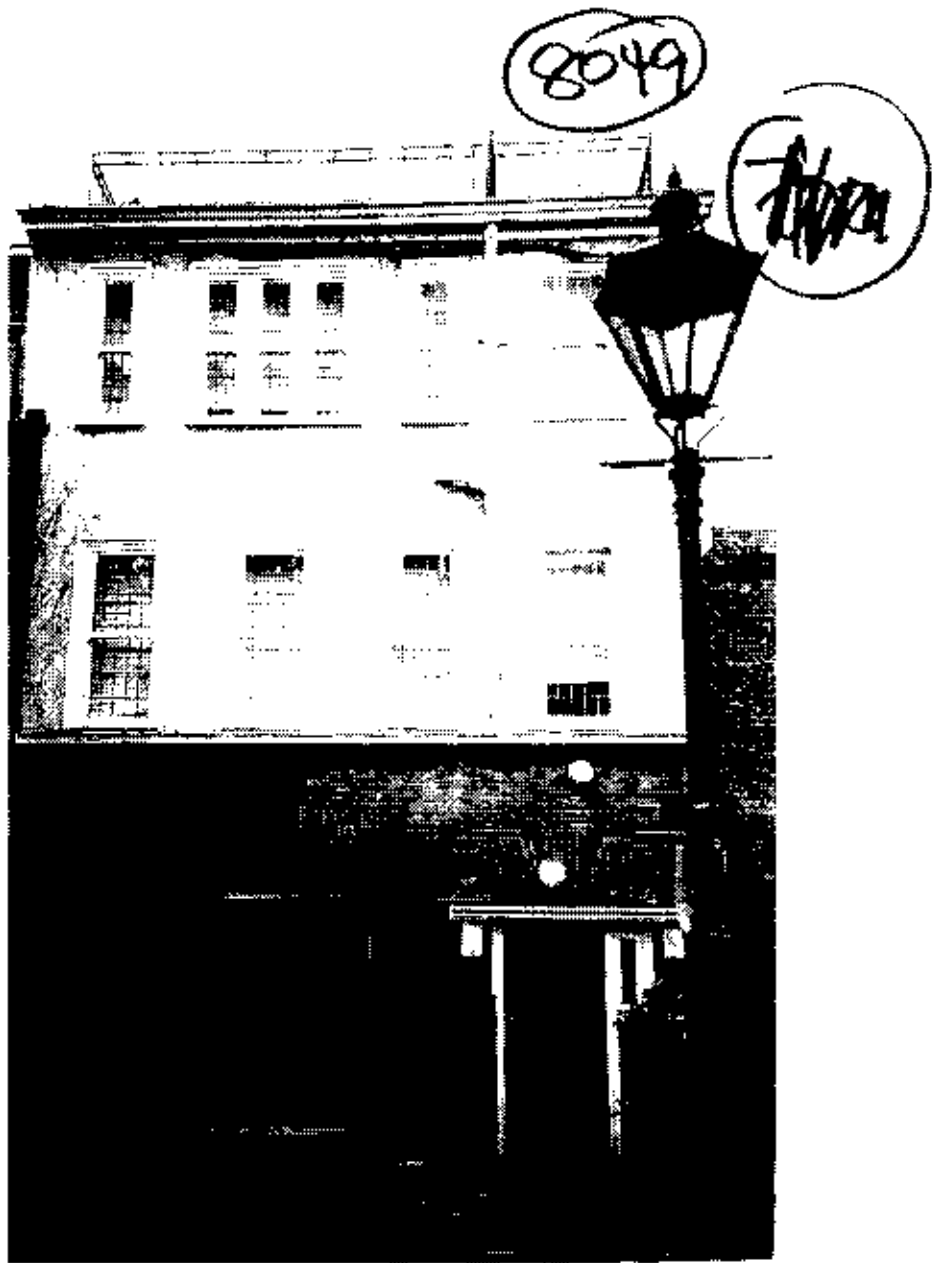


64. RT REF 11/4/9916/30,5.99
No. 26. The building on this site was formerly the Mews building backing onto the rebuilt J T Newman's No. 18, Campden Hill Square. Now red brick four storey, with three arched windows, and new openings on first floor; open staircase. Garage, and parking on cobbled side-walk. No. 24 is also now four storey: red brick dressings to new windows and pedimented doorframe. Limited parking facilities.



8048
10/11

65. RI REF 12/4/99/16,30,5,99
No. 22. Two storey, plus modern glazed upper storeys set back at roof level. Large 'Georgian' windows at first floor level. Limited parking facilities on cobbled forecourt.



66. RE REF 13/4/9916/30.5.99
No. 20. Now three storey 'Arts and Crafts' house with tiled
voussoirs above garage and door case rendered above.
Minimal car-parking facilities.