

# Barlby New Schools

## Proposed Aerial View & Existing Playground Plans



thelandscapepartnership  
planning and designing environments for life



THE ROYAL BOROUGH OF  
KENSINGTON  
AND CHELSEA

Penoyre  
Prosopid&



Special school secondary entrance

Barlby Primary pupil entrance

Relocated playground

Barlby Primary visitor entrance

Relocated ball court

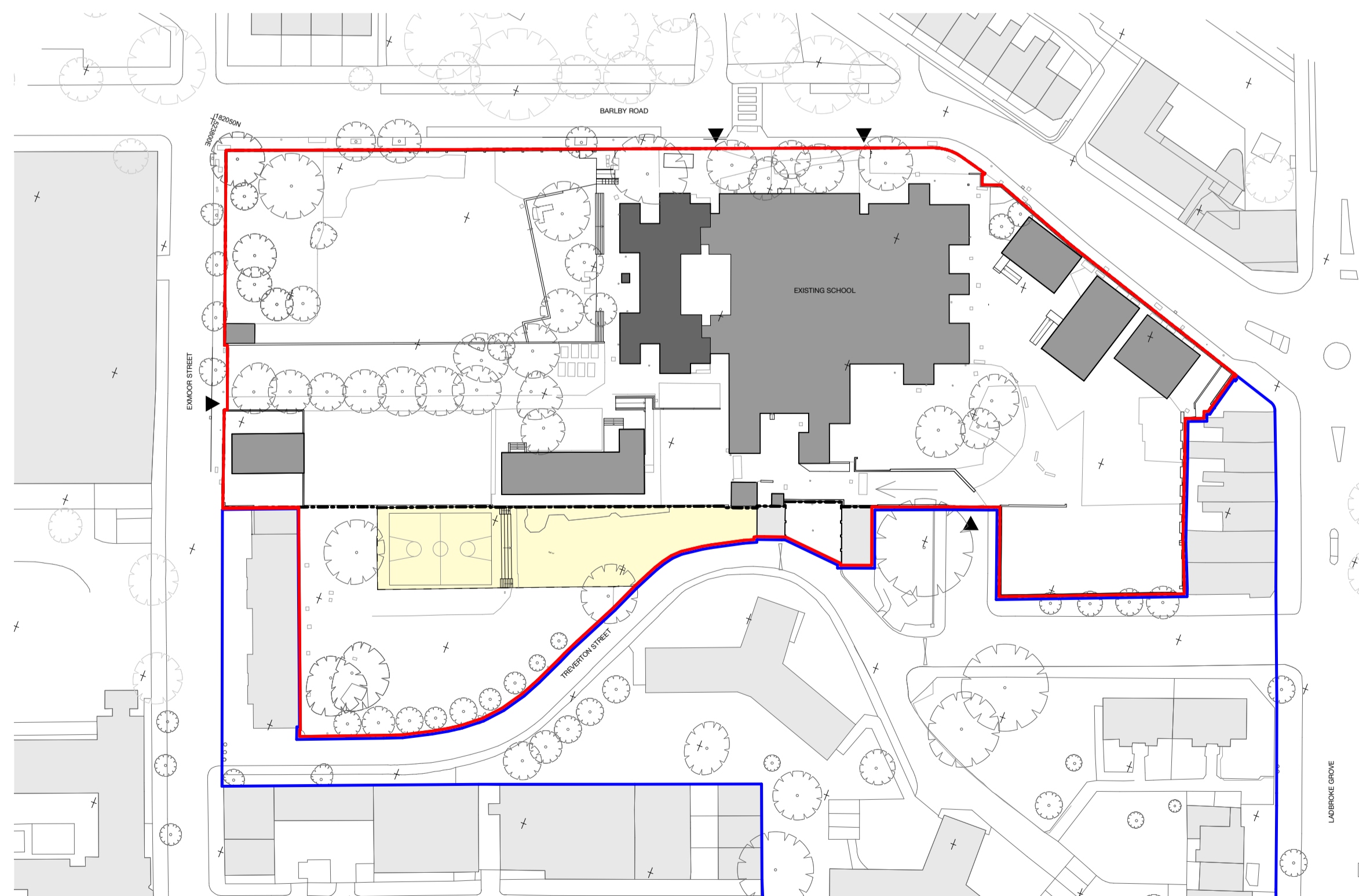
The Royal Borough of Kensington and Chelsea is building a new school between Barlby Road and Treverton Street for Barlby Primary School, and a new Special School. The new Barlby Primary School will have its main entrances from Treverton Street as it is a less busy road. This will mean that the existing play spaces will need to be moved.

We are consulting with residents on the Treverton Estate about the layout of the new and relocated facilities. We expect to construct the new ballcourt before removing the existing one.

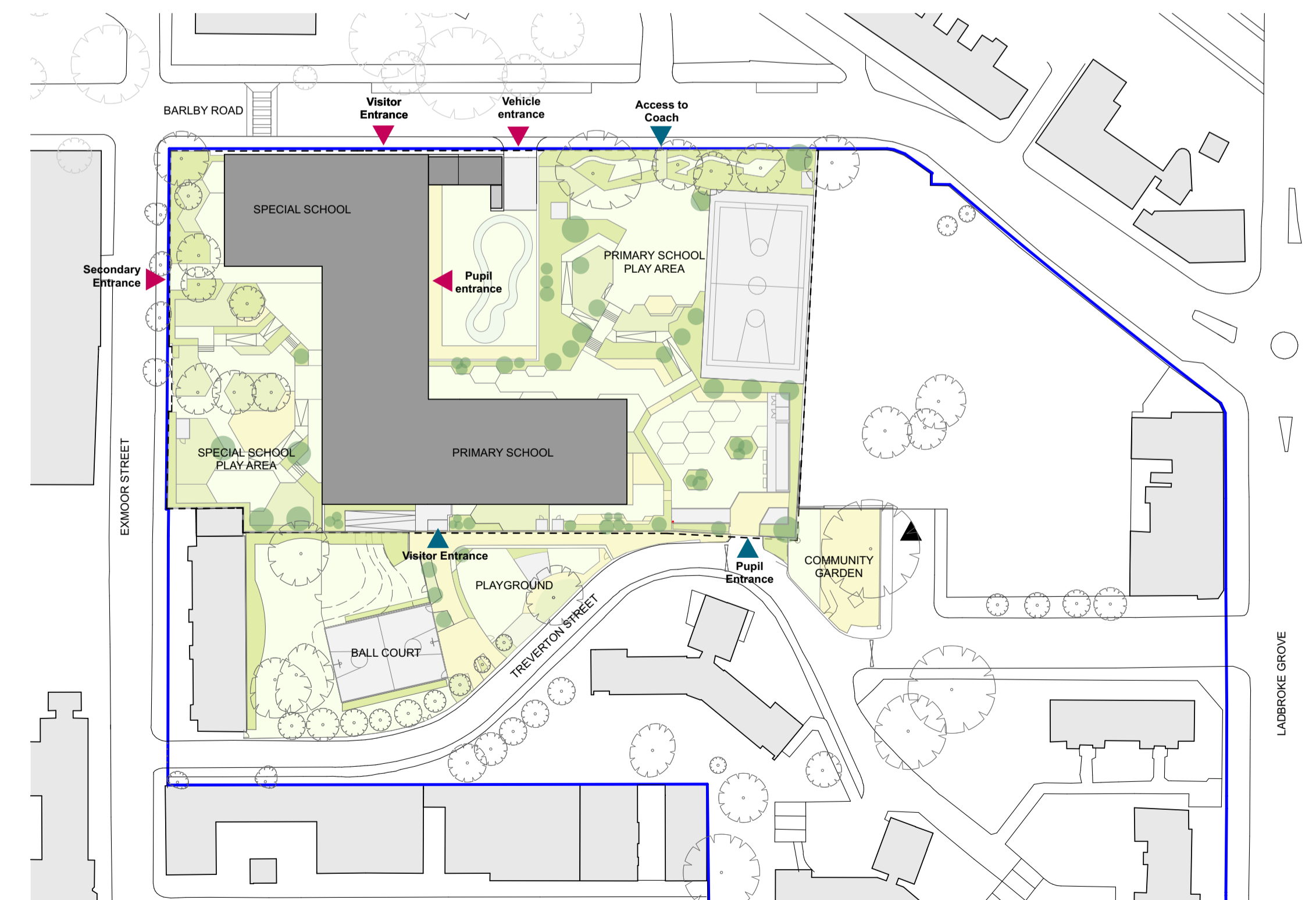
We are proposing expanding the community gardens, replacing the ball court with one of the same size and upgrading the playground equipment within a play area. The spaces between are to be landscaped with seating and plants. The new play and community spaces will complement the new schools and surrounding area to benefit both school children and residents alike.

Although the 6 existing garages on the site will have to be removed from July 2020, we will consult with the users of these garages about replacement garages or parking arrangements.

Bird's eye view from Exmoor Street and Treverton Street corner



Existing plan - 1:750



New school with new playground and ball court - 1:750



# Barlby New Schools

## Illustrated Plan

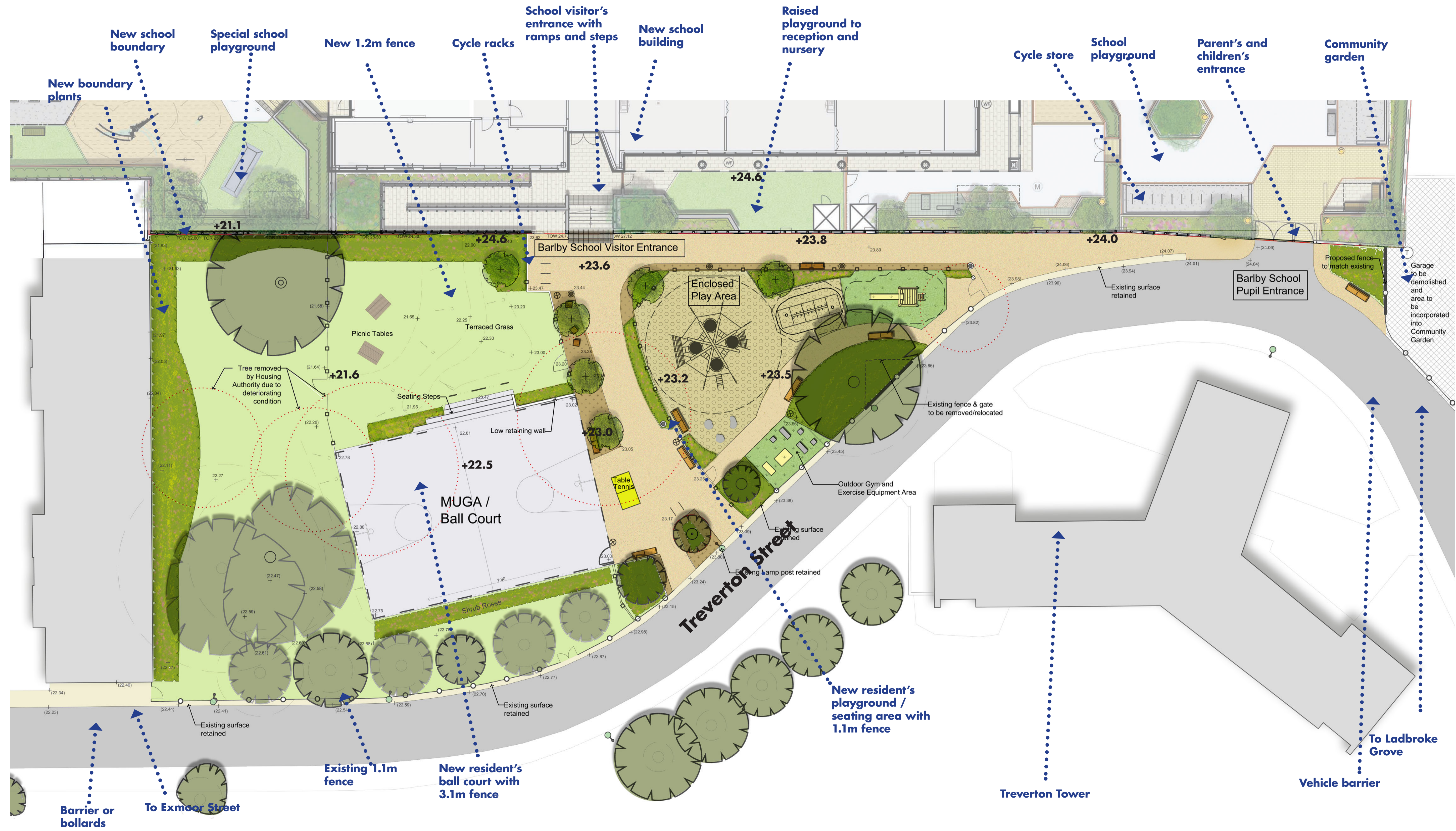


the **landscapepartnership**  
planning and designing environments for life



THE ROYAL BOROUGH OF  
**KENSINGTON  
AND CHELSEA**

Penoyre  
Prosopid



Illustrated plan of proposed Treverton Street activity areas



0 2 10 20m



# Barlby New Schools

## Fence options



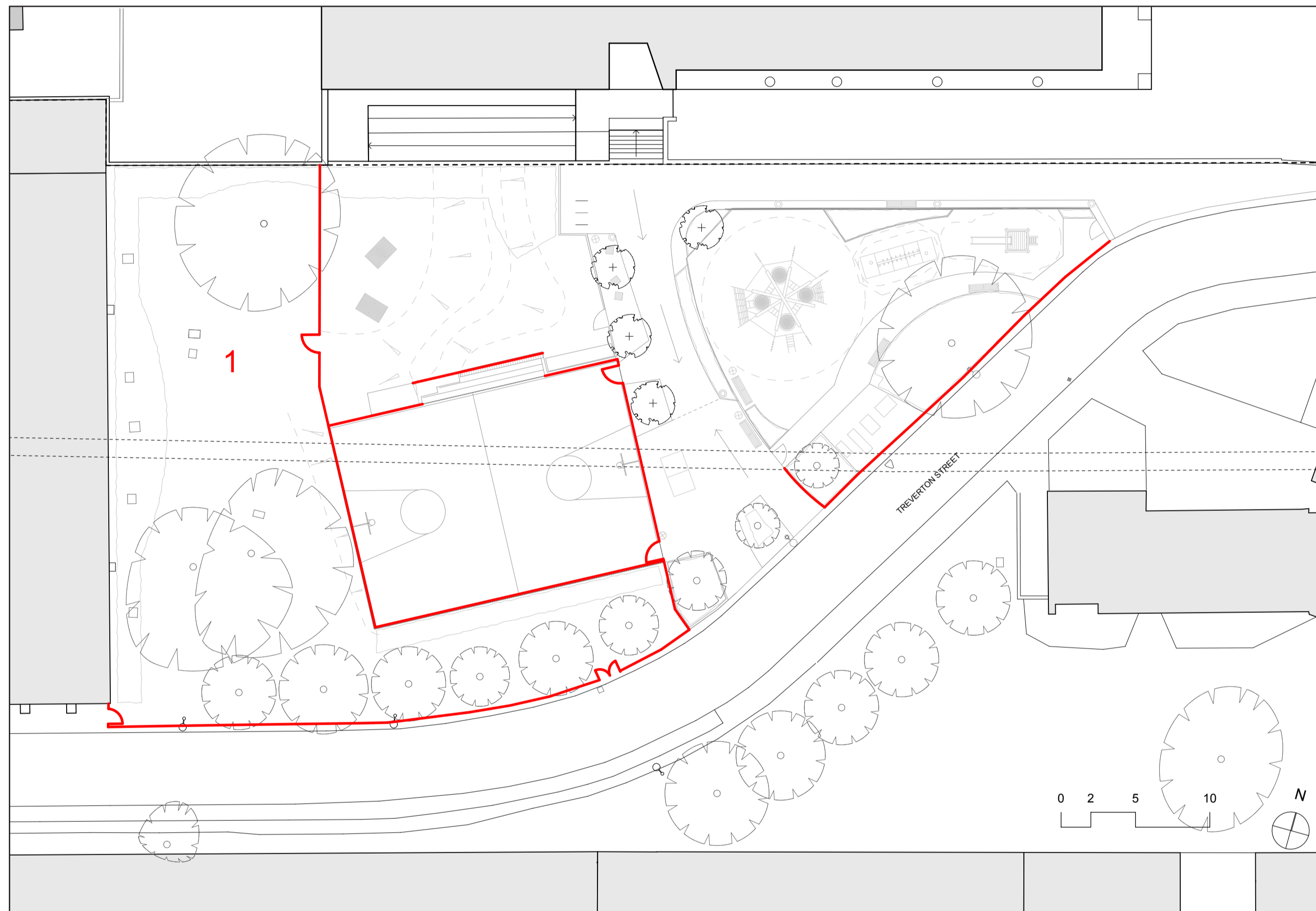
the **landscape** partnership  
planning and designing environments for life



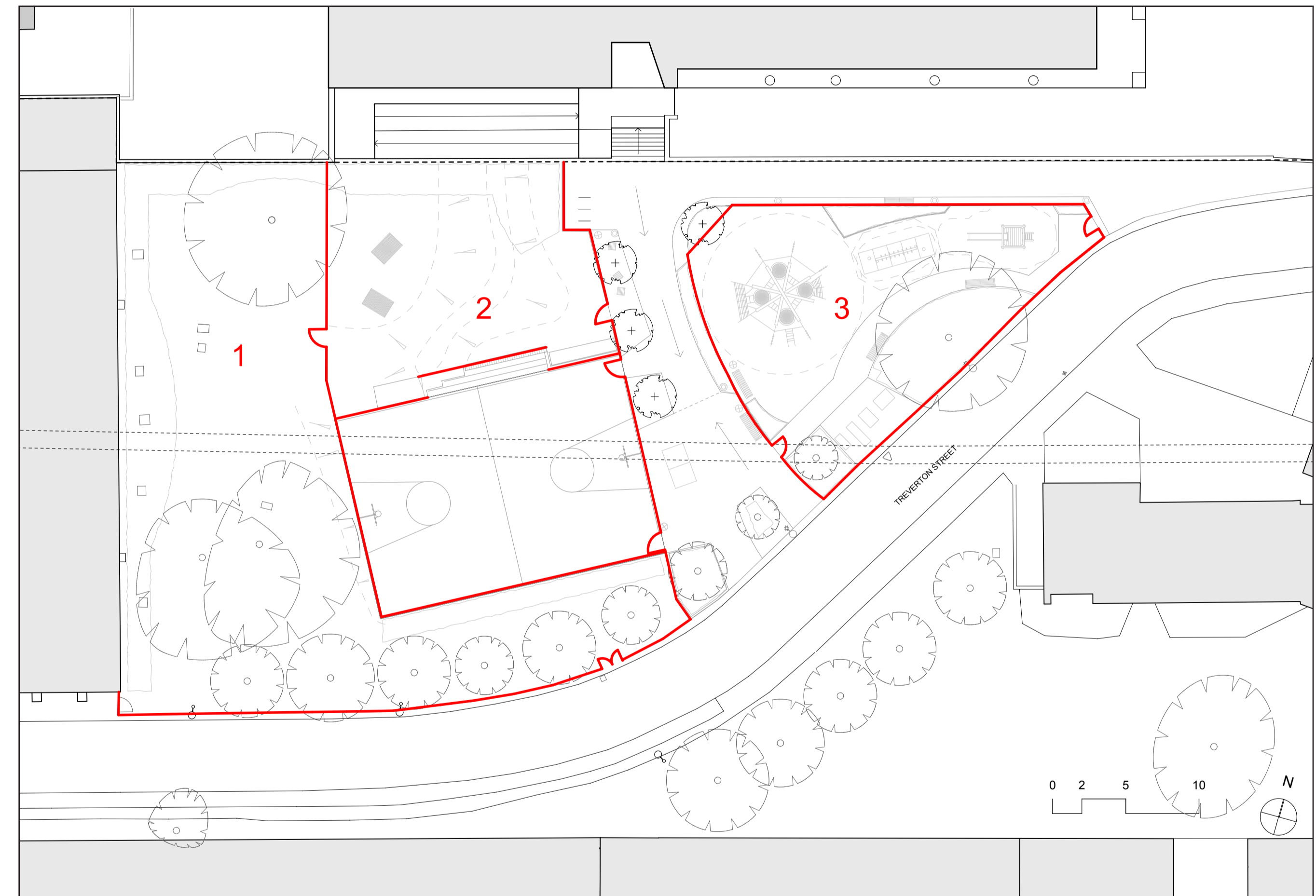
THE ROYAL BOROUGH OF  
**KENSINGTON  
AND CHELSEA**

Penoyre  
& Prosser

**Option A**  
Area 1 enclosed



**Option B**  
Areas 1, 2 & 3 enclosed





# Barlby New Schools

## Phasing Plans



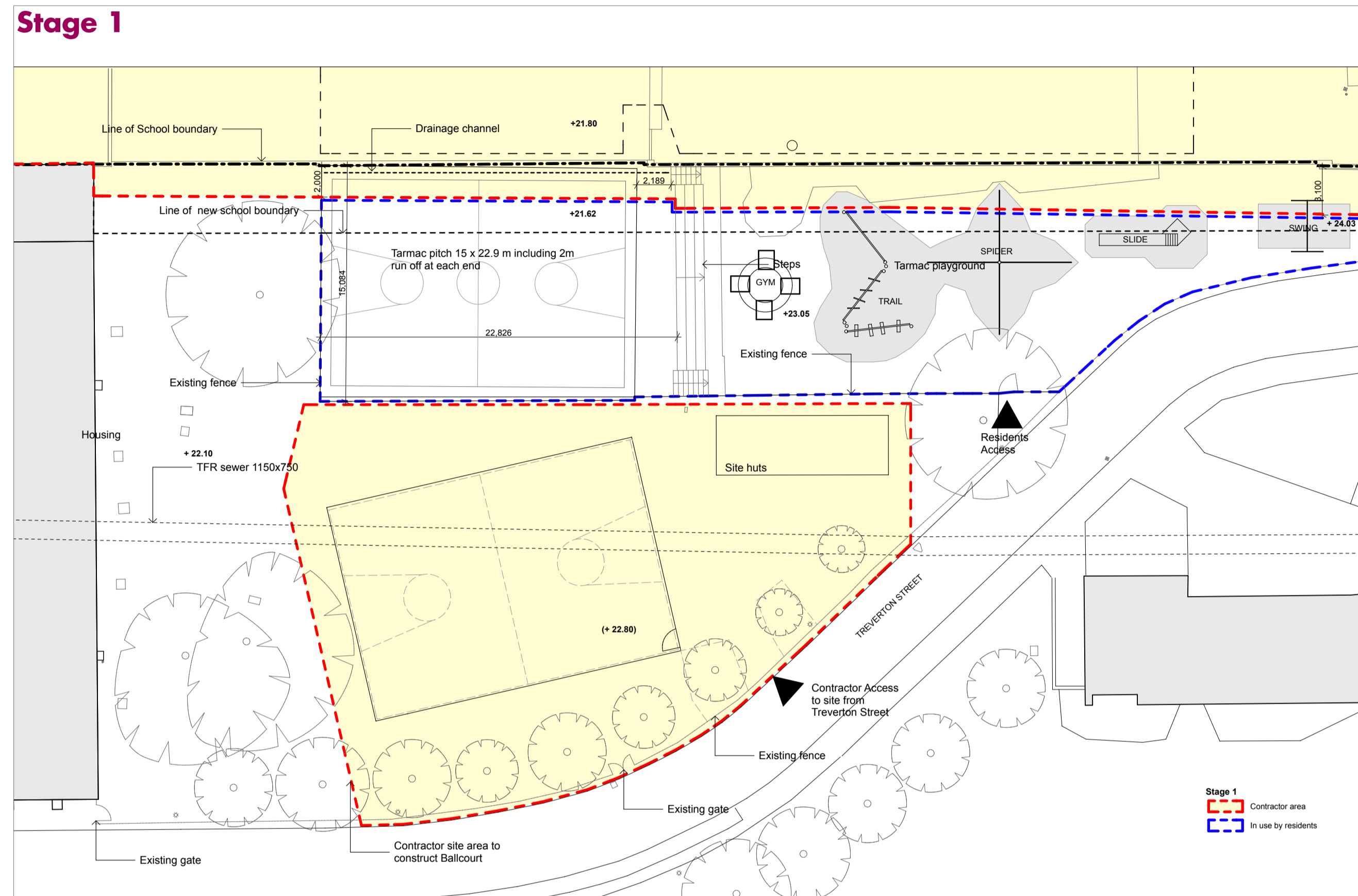
the **landscapepartnership**  
planning and designing environments for life



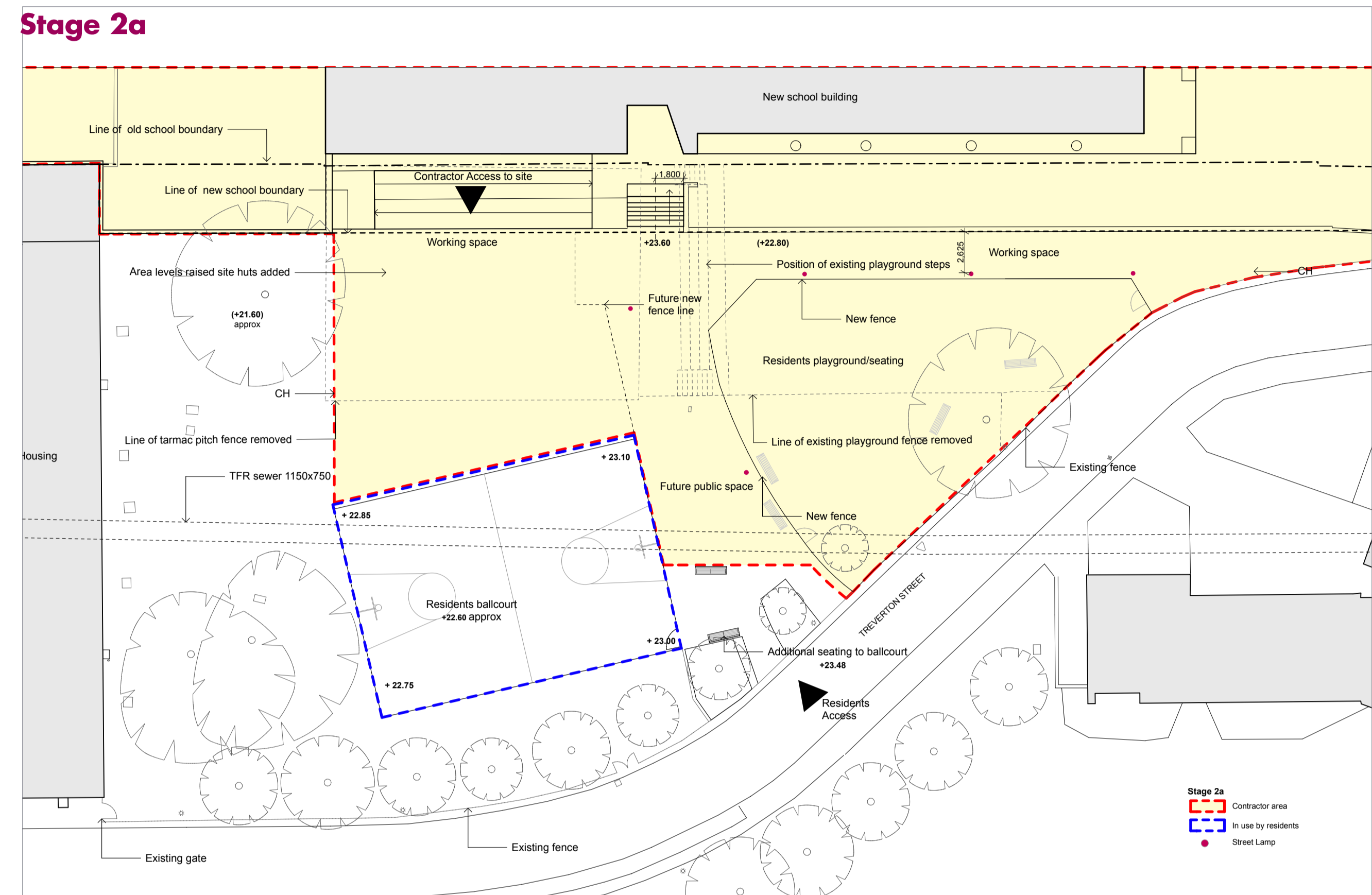
THE ROYAL BOROUGH OF  
**KENSINGTON  
AND CHELSEA**

Penoyre  
Prasad

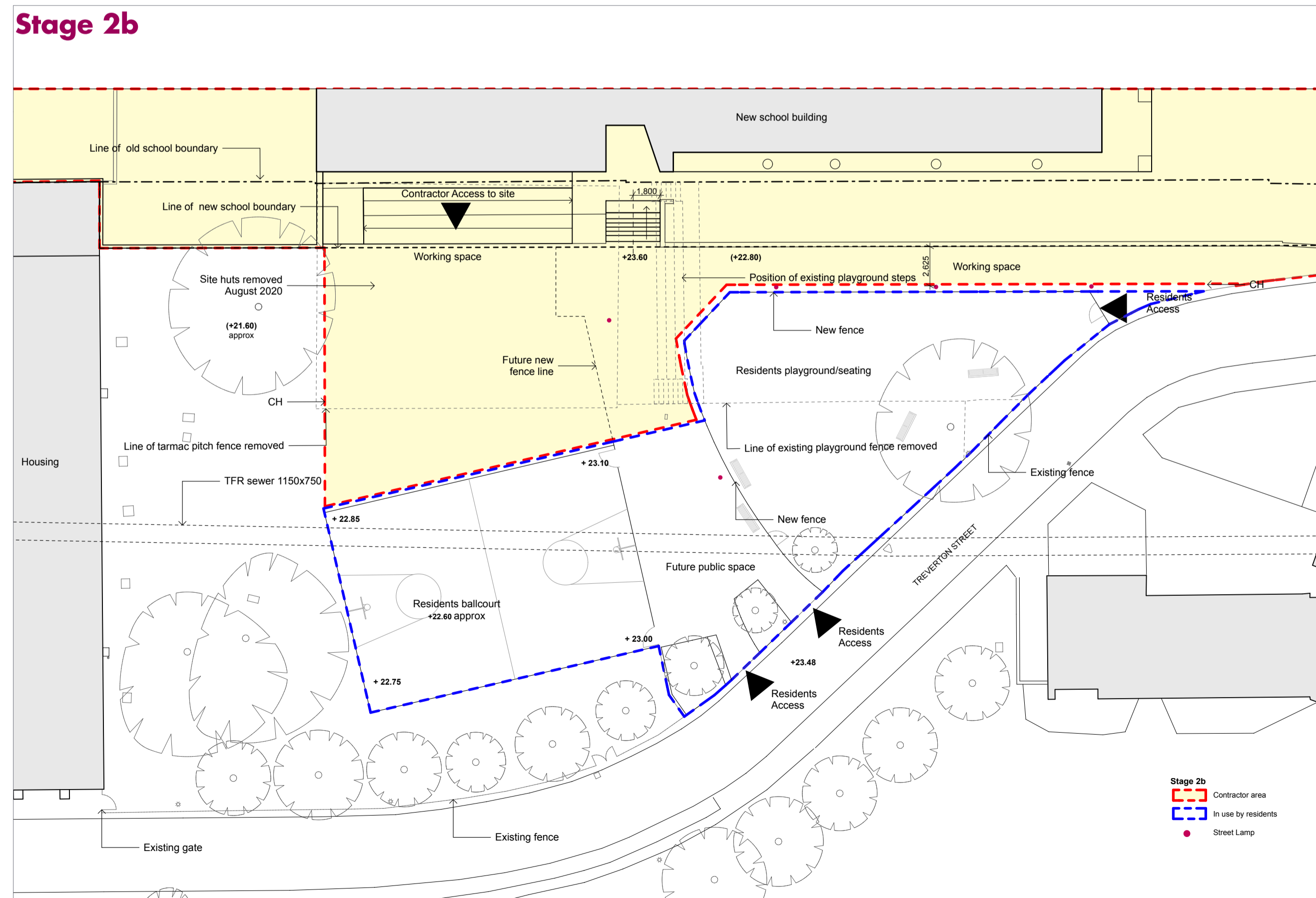
### Stage 1



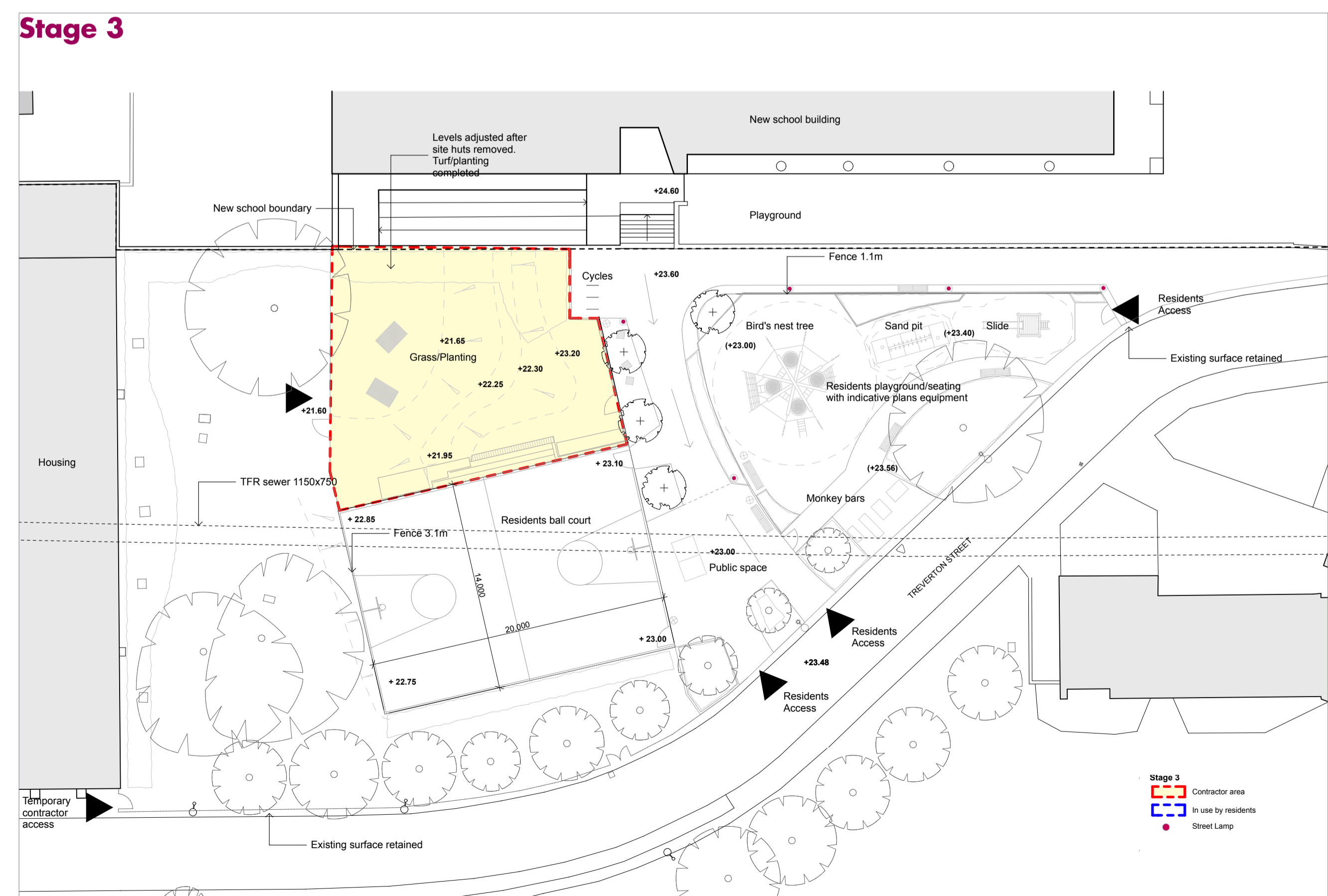
### Stage 2a



### Stage 2b



### Stage 3





# Barlby New Schools

## Play & Exercise Equipment

### Play & Exercise Equipment

The aim is to appeal to a wide age range of users. The illustrations shown here are examples of typical equipment types which are being considered.



Climbing Structure



Fixed outdoor jumping blocks/seat



Junior Play, e.g. Timber Monkey Bars



Junior Play, e.g. Timber Platform Slide

All items are indicative only

### Play Equipment

### Adult Exercise Equipment



Bicycle



Slalom skier



Cross trainer



Rower

Barlby School Off-Site Area  
Fenced Play Area  
Childrens Play Equipment  
15-08-2018



# Barlby New Schools

## Off-Site Area



the **landscape** partnership  
planning and designing environments for life



THE ROYAL BOROUGH OF  
**KENSINGTON  
AND CHELSEA**

Penoyre  
& Prosser



Table Tennis



Trees in self-binding gravel



Timber picnic table & bench



Timber cube seats

**Barlby School Off-Site Area**  
Fenced Play Area  
Childrens Play Equipment  
15-08-2018

the **landscape** partnership