

# New Developments in the High Street



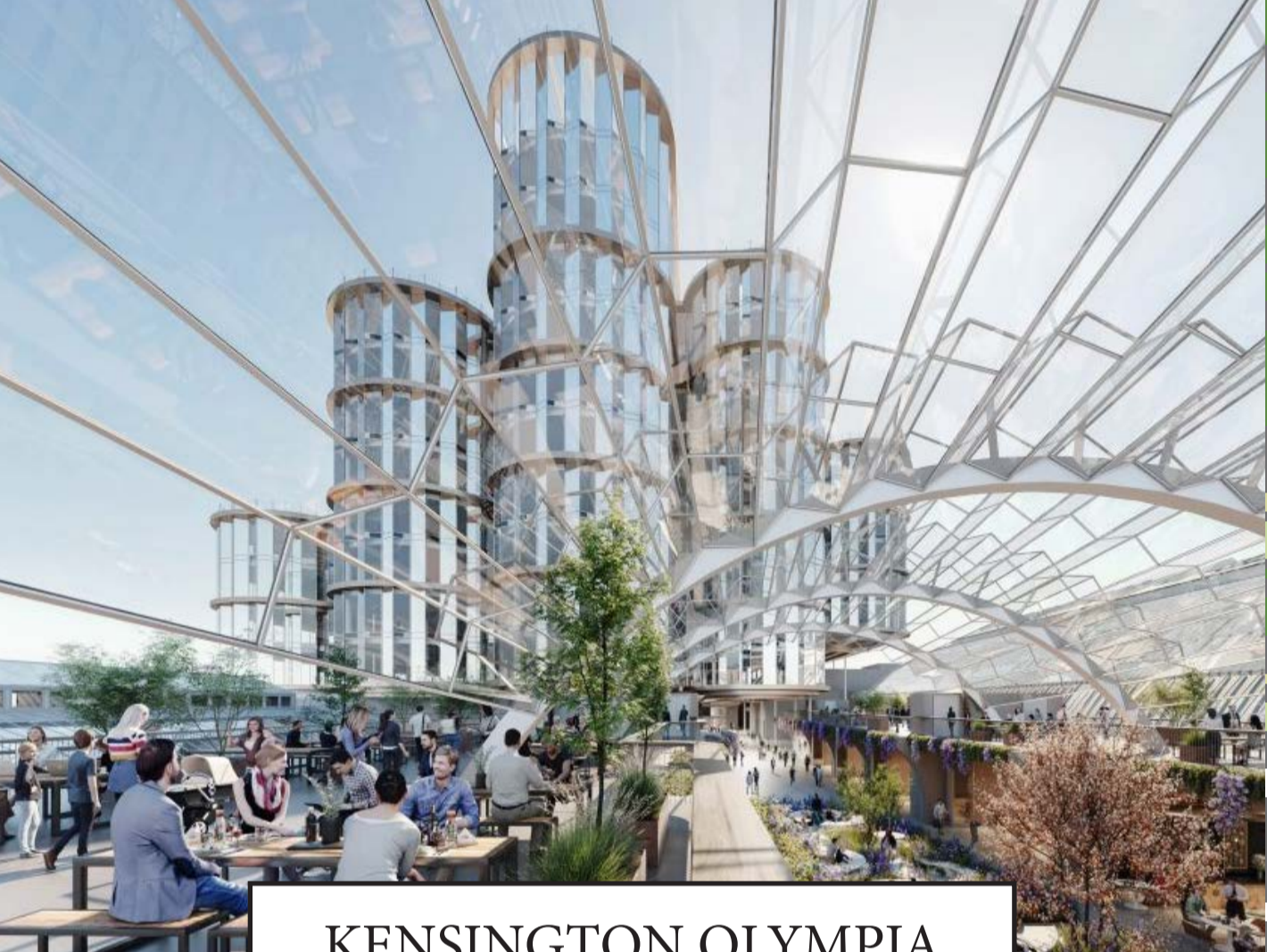
**A NEW CINEMA**

- A New Cinema
- Cinema: Single prominent cinema entrance on High St - remove Earls Court Rd entrance.
  - Cinema Operator: Single cinema operator rather than two separate operators
  - Residential: More private and affordable housing
  - Public use of arch: Change of use from approved residential entrance to restaurant use
  - Improve activation of high street: Increase vibrancy through increased restaurant provision



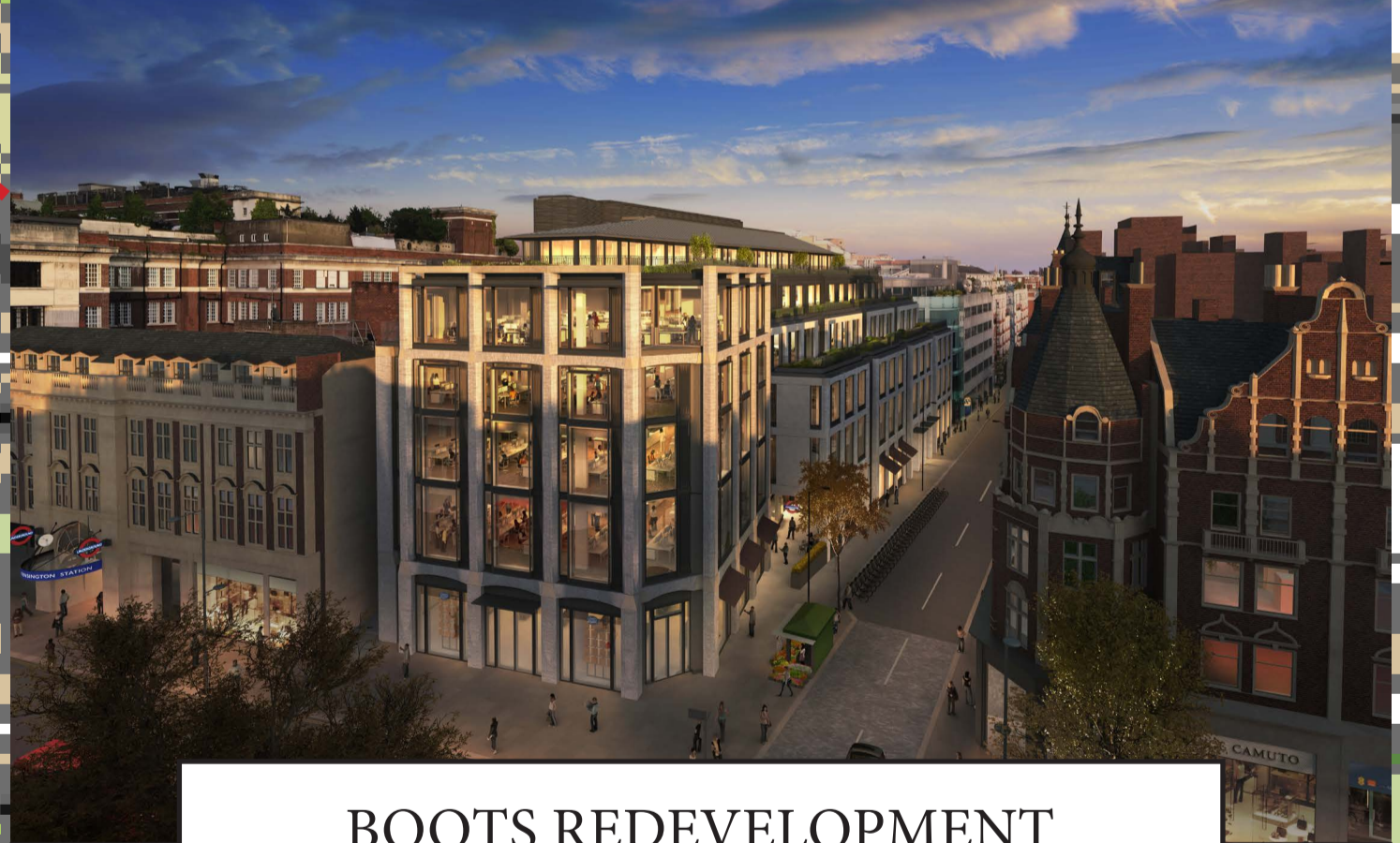
**LANCER SQUARE**

- Lancer Square
- The original Lancer Square development, particularly the courtyard retail was not very successful
  - It is being redeveloped to provide a mixed use development of four buildings ranging from four to seven storeys including retail, office and residential.



**KENSINGTON OLYMPIA**

- Olympia
- New 13 story central office building
  - Two new hotels
  - More retail
  - New mezzanine levels in the exhibition halls
  - Skywalk



**BOOTS REDEVELOPMENT**

- Boots
- Planning permission has been granted for alteration, refurbishment and extension of the Boots building and the office block behind, and demolition of the Café Nero pavilion.
  - This will create a westward extension of High Street Kensington Mall
  - The Boots store will remain open throughout the development