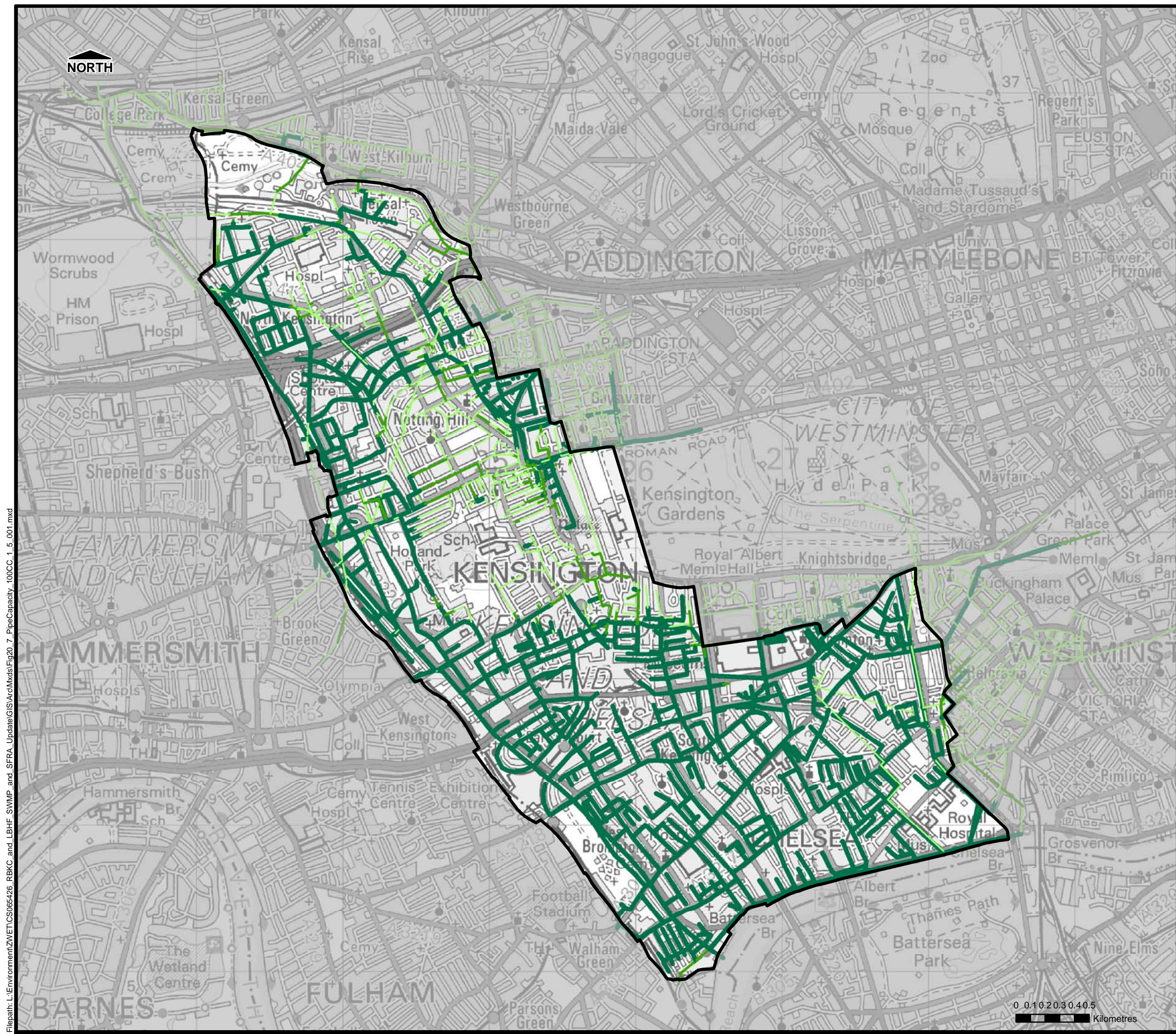


Filepath: L:\Environment\ZNET\CS065426\_RBKC\_and\_SFRA\_Update\GIS\Act\Mxds\Fig20\_7\_PipeCapacity\_100CC\_1\_5\_001.mxd



THIS DRAWING MAY BE USED ONLY FOR THE PURPOSE INTENDED

Legend

- Administrative Boundary
- Maximum Percentage Full\***
  - 0 - 25 %
  - 25 - 75 %
  - 75 - 100 %

Notes

\*Percentage of the peak flow area over the pipe area. Pipes flowing full at any point during the simulation will have a value of 100%

Royal Borough of Kensington and Chelsea



THE ROYAL BOROUGH OF  
KENSINGTON  
AND CHELSEA

Surface Water Management Plan

© Crown Copyright. All rights reserved Royal Borough of Kensington and Chelsea. Licence No.LA100019223 (2013). Covers all data that has been supplied and distributed under license for the Royal Borough of Kensington and Chelsea SWMP project.

Scale at A3	Date	Drawn by	Approved by
1:25,000	Jan. 2014	G.ATHANASIA	P.HLINOVSKY

Pipe Capacity Percentage Full  
1 in 100yr CC, 1.5hr duration

Consultant

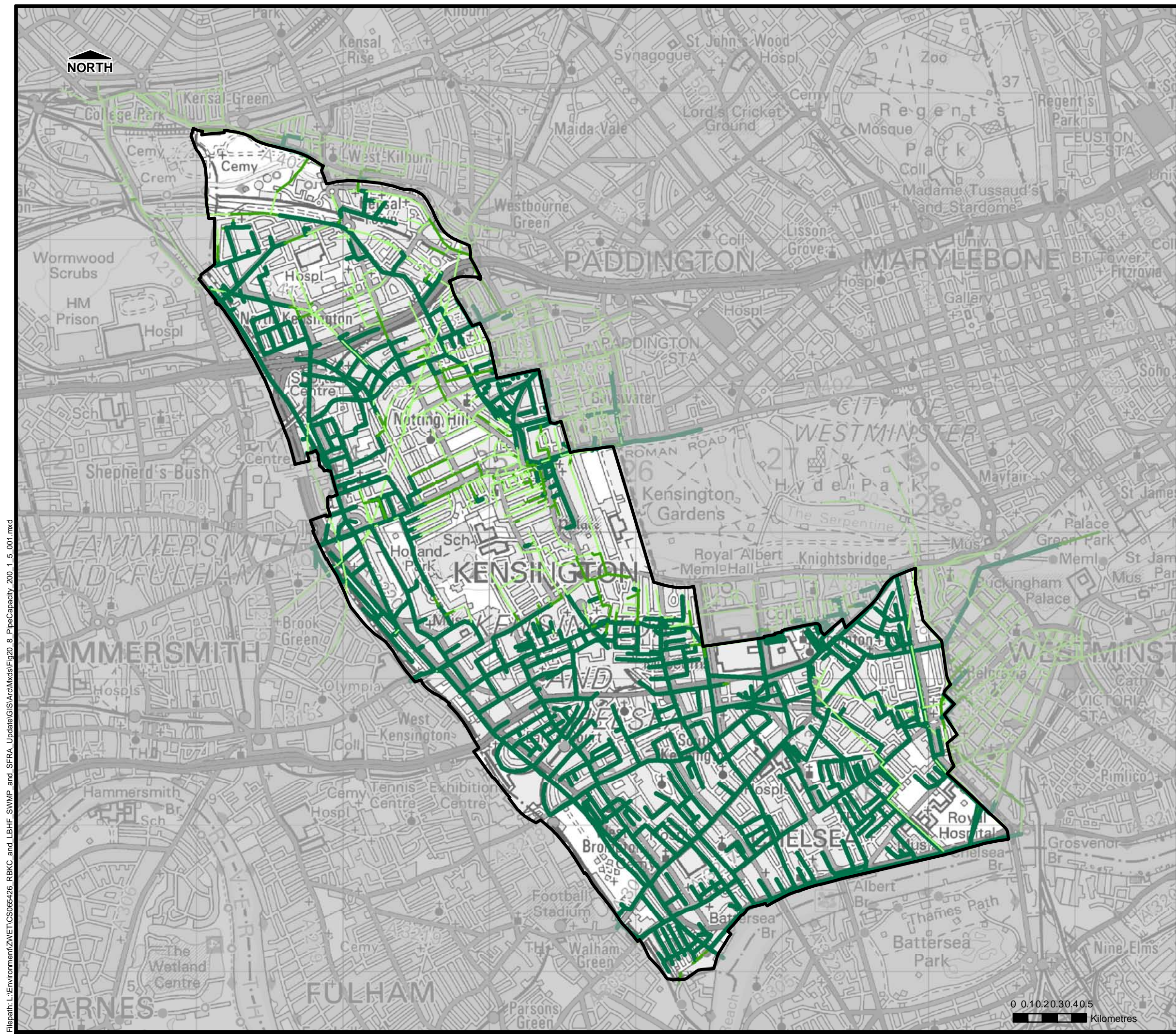


Capita Symonds  
Level Six,  
Procter House,  
1 Procter Street,  
London  
WC1V 6DW

FIGURE 20.7




Filepath: L:\Environment\ZNET\CS065426\_RBKC and LBHF\_SWMP and SFRA\_Update\GIS\Act\Mxds\Fig20\_8\_PipeCapacity\_200\_1\_5\_001.mxd




THIS DRAWING MAY BE USED ONLY FOR THE PURPOSE INTENDED


Legend

 Administrative Boundary

Maximum Percentage Full\*

 0 - 25 %

 25 - 75 %

 75 - 100 %

Notes

\*Percentage of the peak flow area over the pipe area. Pipes flowing full at any point during the simulation will have a value of 100%

Royal Borough of Kensington and Chelsea



THE ROYAL BOROUGH OF KENSINGTON AND CHELSEA

Surface Water Management Plan

© Crown Copyright. All rights reserved Royal Borough of Kensington and Chelsea. Licence No.LA100019223 (2013). Covers all data that has been supplied and distributed under license for the Royal Borough of Kensington and Chelsea SWMP project.

Scale at A3	Date	Drawn by	Approved by
1:25,000	Jan. 2014	G.ATHANASIA	P.HLINOVSKY

Pipe Capacity Percentage Full  
1 in 200yr, 1.5hr duration

Consultant

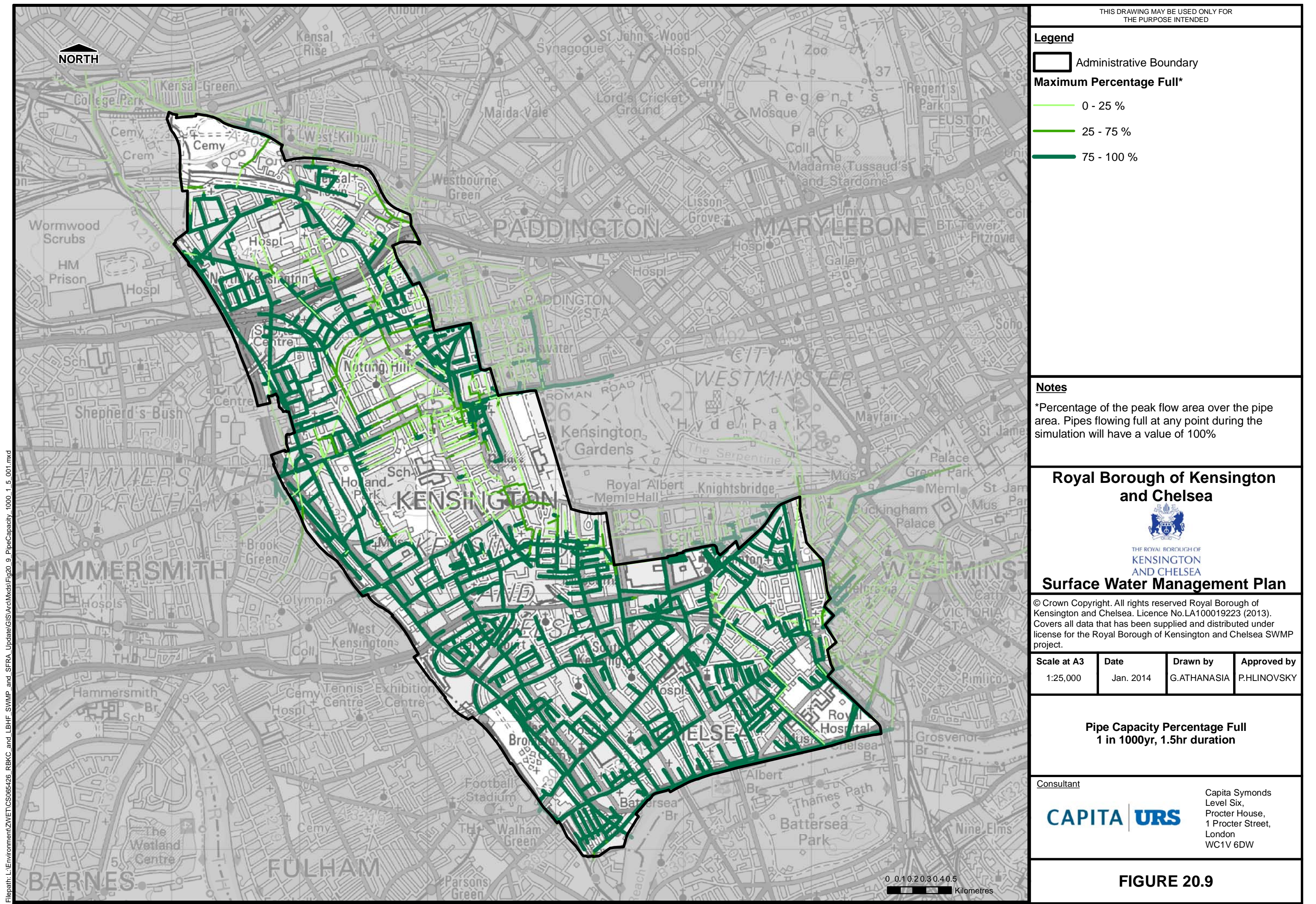
**CAPITA | URS**

Capita Symonds  
Level Six,  
Procter House,  
1 Procter Street,  
London  
WC1V 6DW

FIGURE 20.8

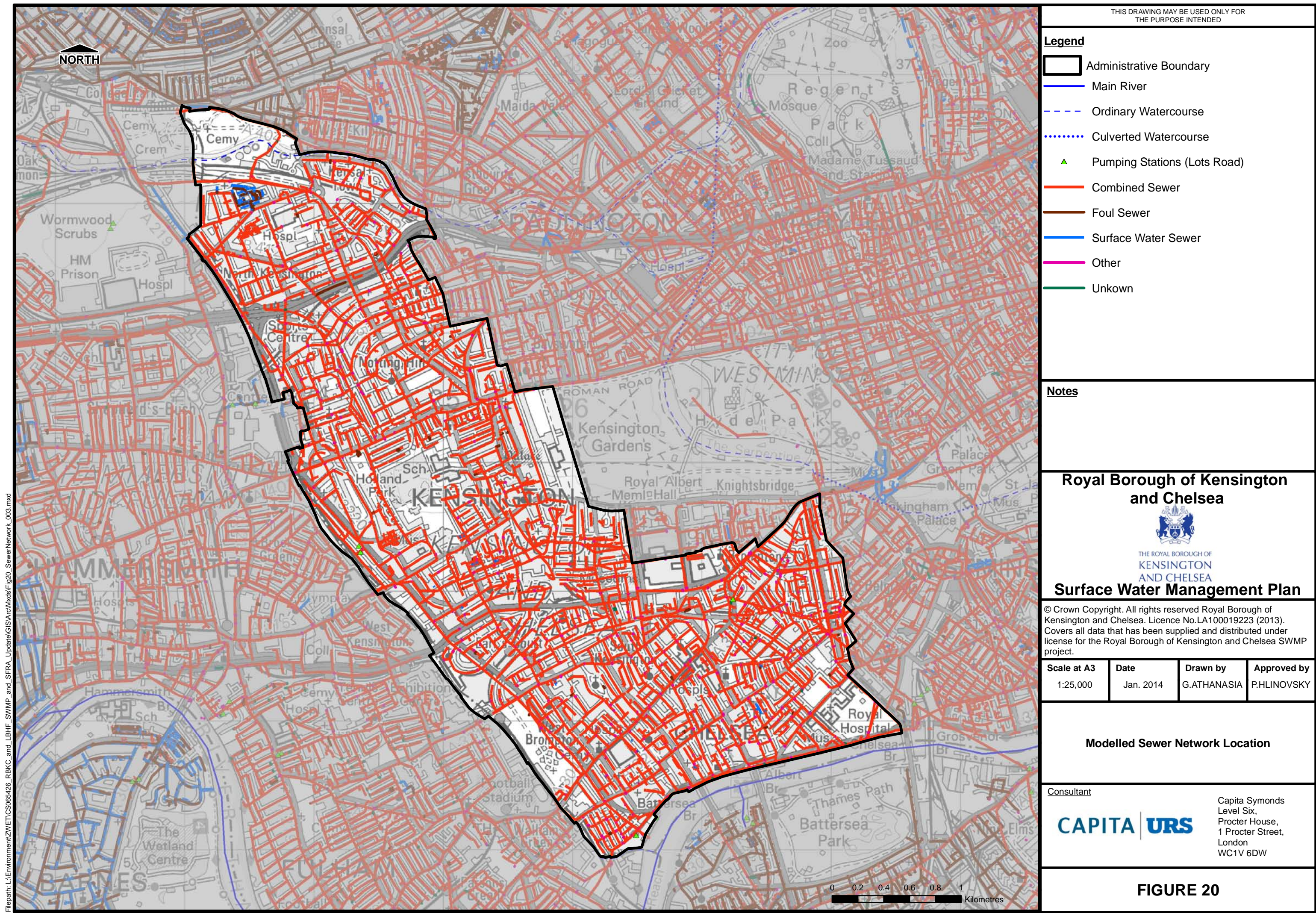


Filepath: L:\Environment\ZNET\CS065426\_RBKC and LBHF\_SWMP and SFRA\_Update\GIS\Act\Mxds\Fig20\_9\_PipeCapacity\_1000\_1\_5\_001.mxd



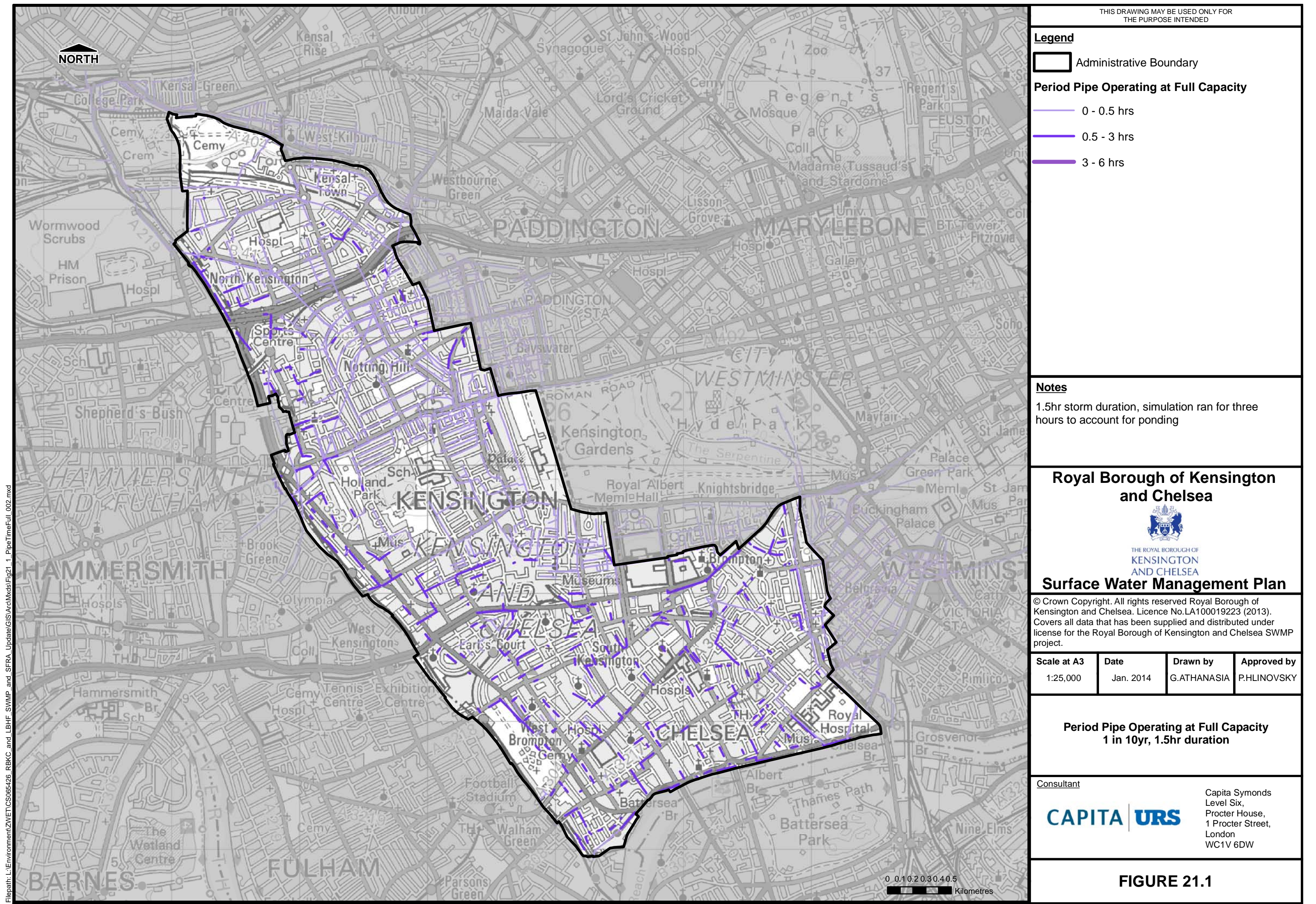


Filepath: L:\Environment\ZVET\CS065426\_RBKC\_and\_SFRA\_Update\GIS\ArcMxds\Fig20\_SewerNetwork\_003.mxd





Filepath: L:\Environment\ZNET\CS065426\_RBKC and LBHF\_SWMP and SFRA\_Update\GIS\Act\Mxd\Fig21\_1\_PipeTimeFull\_002.mxd



THIS DRAWING MAY BE USED ONLY FOR THE PURPOSE INTENDED

Legend

Administrative Boundary

Period Pipe Operating at Full Capacity

- 0 - 0.5 hrs
- 0.5 - 3 hrs
- 3 - 6 hrs

Notes

1.5hr storm duration, simulation ran for three hours to account for ponding

Royal Borough of Kensington and Chelsea



THE ROYAL BOROUGH OF KENSINGTON AND CHELSEA

Surface Water Management Plan

© Crown Copyright. All rights reserved Royal Borough of Kensington and Chelsea. Licence No.LA100019223 (2013). Covers all data that has been supplied and distributed under license for the Royal Borough of Kensington and Chelsea SWMP project.

Scale at A3	Date	Drawn by	Approved by
1:25,000	Jan. 2014	G.ATHANASIA	P.HLINOVSKY

Period Pipe Operating at Full Capacity 1 in 10yr, 1.5hr duration

Consultant

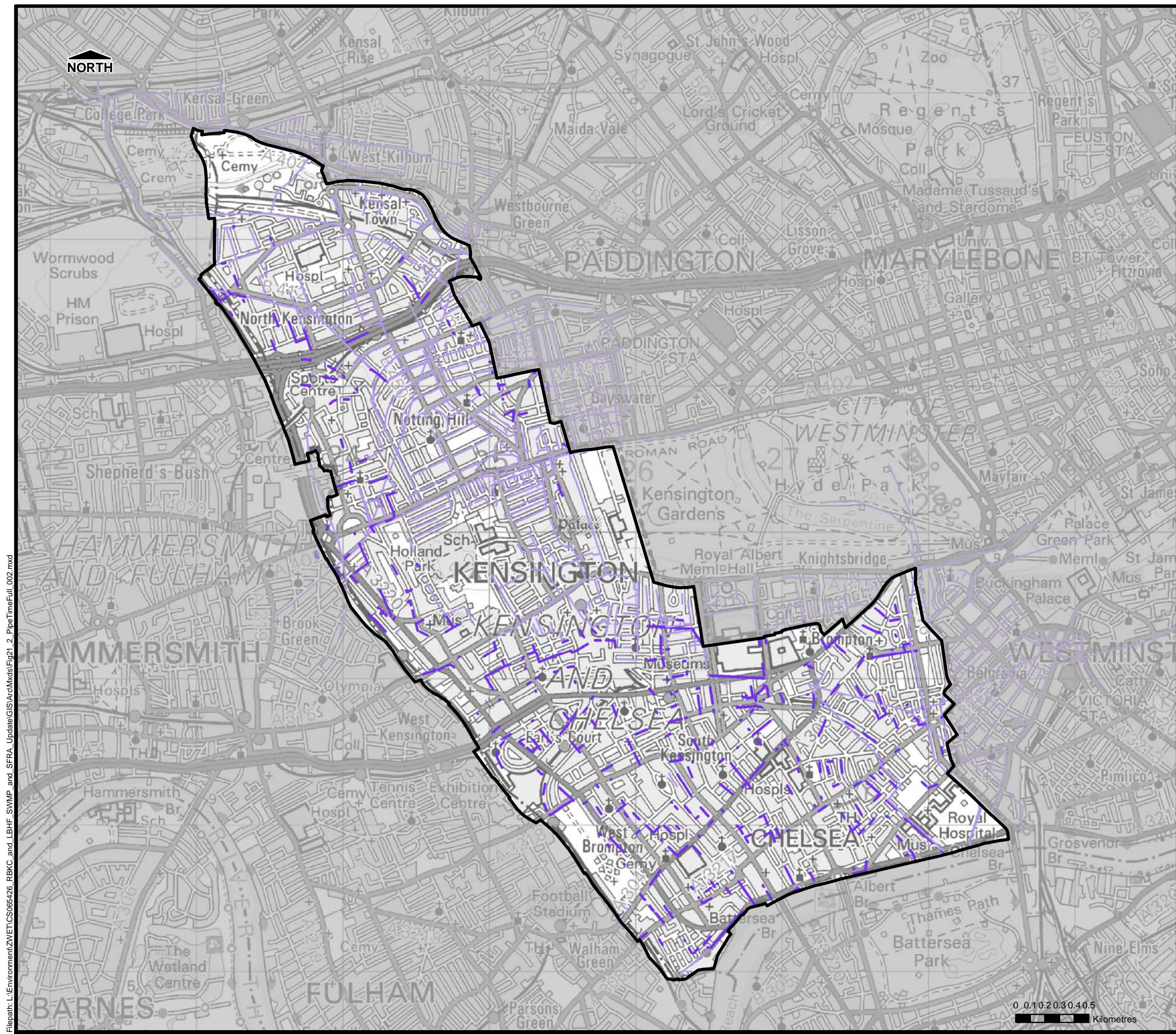


Capita Symonds  
Level Six,  
Procter House,  
1 Procter Street,  
London  
WC1V 6DW

FIGURE 21.1



Filepath: L:\Environment\ZNET\CS065426\_RBKC and LBHF\_SWMP and SFRA\_Update\GIS\Act\Mxds\Fig21\_2\_PipeTimeFull\_002.mxd



THIS DRAWING MAY BE USED ONLY FOR THE PURPOSE INTENDED

Legend

Administrative Boundary

Period Pipe Operating at Full Capacity

- 0 - 0.5 hrs
- 0.5 - 3 hrs
- 3 - 6 hrs

Notes

1.5hr storm duration, simulation ran for three hours to account for ponding

Royal Borough of Kensington and Chelsea



THE ROYAL BOROUGH OF KENSINGTON AND CHELSEA

Surface Water Management Plan

© Crown Copyright. All rights reserved Royal Borough of Kensington and Chelsea. Licence No.LA100019223 (2013). Covers all data that has been supplied and distributed under license for the Royal Borough of Kensington and Chelsea SWMP project.

Scale at A3	Date	Drawn by	Approved by
1:25,000	Jan. 2014	G.ATHANASIA	P.HLINOVSKY

Period Pipe Operating at Full Capacity 1 in 20yr, 1.5hr duration

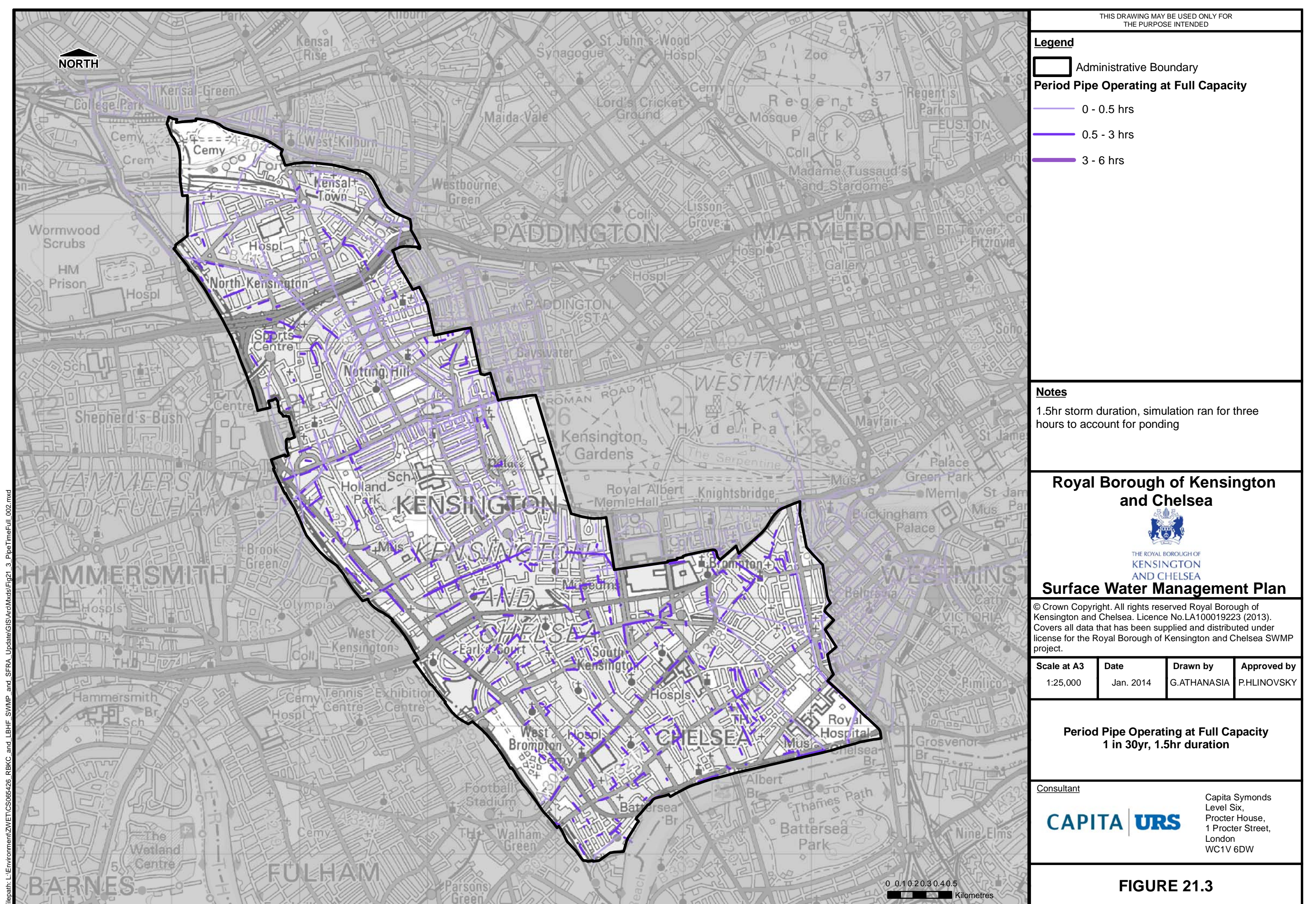
Consultant

Capita Symonds  
Level Six,  
Procter House,  
1 Procter Street,  
London  
WC1V 6DW

FIGURE 21.2







Filepath: L:\Environment\ZNET\CS065426\_RBKC and LBHF\_SWMP and SFRA\_Update\GIS\Act\Mxd\Fig21\_3\_PipeTimeFull\_002.mxd



THIS DRAWING MAY BE USED ONLY FOR THE PURPOSE INTENDED

**Legend**

-  Administrative Boundary
- Period Pipe Operating at Full Capacity**
  -  0 - 0.5 hrs
  -  0.5 - 3 hrs
  -  3 - 6 hrs

**Notes**

1.5hr storm duration, simulation ran for three hours to account for ponding

**Royal Borough of Kensington and Chelsea**



THE ROYAL BOROUGH OF KENSINGTON AND CHELSEA

**Surface Water Management Plan**

© Crown Copyright. All rights reserved Royal Borough of Kensington and Chelsea. Licence No.LA100019223 (2013). Covers all data that has been supplied and distributed under license for the Royal Borough of Kensington and Chelsea SWMP project.

Scale at A3	Date	Drawn by	Approved by
1:25,000	Jan. 2014	G.ATHANASIA	P.HLINOVSKY

**Period Pipe Operating at Full Capacity  
1 in 30yr, 1.5hr duration**

**Consultant**

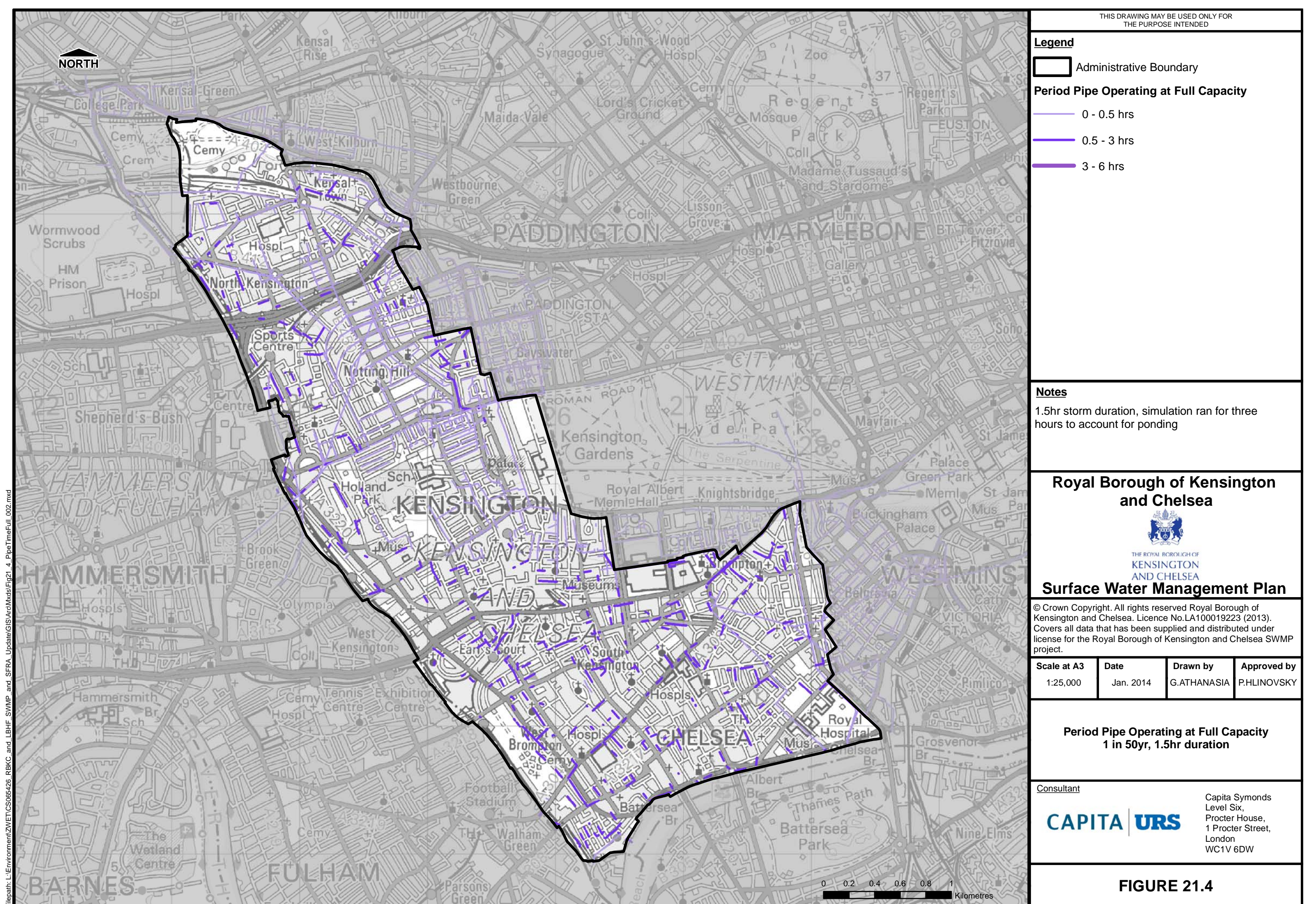


Capita Symonds  
Level Six,  
Procter House,  
1 Procter Street,  
London  
WC1V 6DW

**FIGURE 21.3**



Filepath: L:\Environment\ZNET\CS065426\_RBKC and LBHF\_SWMP and SFRA\_Update\GIS\Act\Mxds\Fig21\_4\_PipeTimeFull\_002.mxd





THIS DRAWING MAY BE USED ONLY FOR THE PURPOSE INTENDED

**Legend**

 Administrative Boundary

**Period Pipe Operating at Full Capacity**

 0 - 0.5 hrs

 0.5 - 3 hrs

 3 - 6 hrs

**Notes**

1.5hr storm duration, simulation ran for three hours to account for ponding

**Royal Borough of Kensington and Chelsea**



THE ROYAL BOROUGH OF  
KENSINGTON  
AND CHELSEA

**Surface Water Management Plan**

© Crown Copyright. All rights reserved Royal Borough of Kensington and Chelsea. Licence No.LA100019223 (2013). Covers all data that has been supplied and distributed under license for the Royal Borough of Kensington and Chelsea SWMP project.

Scale at A3	Date	Drawn by	Approved by
1:25,000	Jan. 2014	G.ATHANASIA	P.HLINOVSKY

**Period Pipe Operating at Full Capacity  
1 in 50yr, 1.5hr duration**

**Consultant**

**CAPITA | URS**

Capita Symonds  
Level Six,  
Procter House,  
1 Procter Street,  
London  
WC1V 6DW

**FIGURE 21.4**