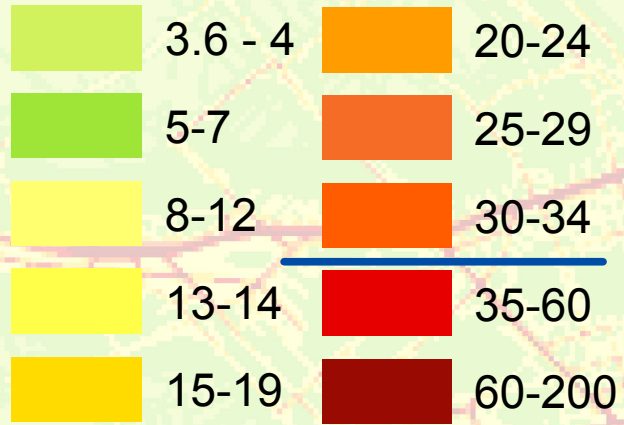
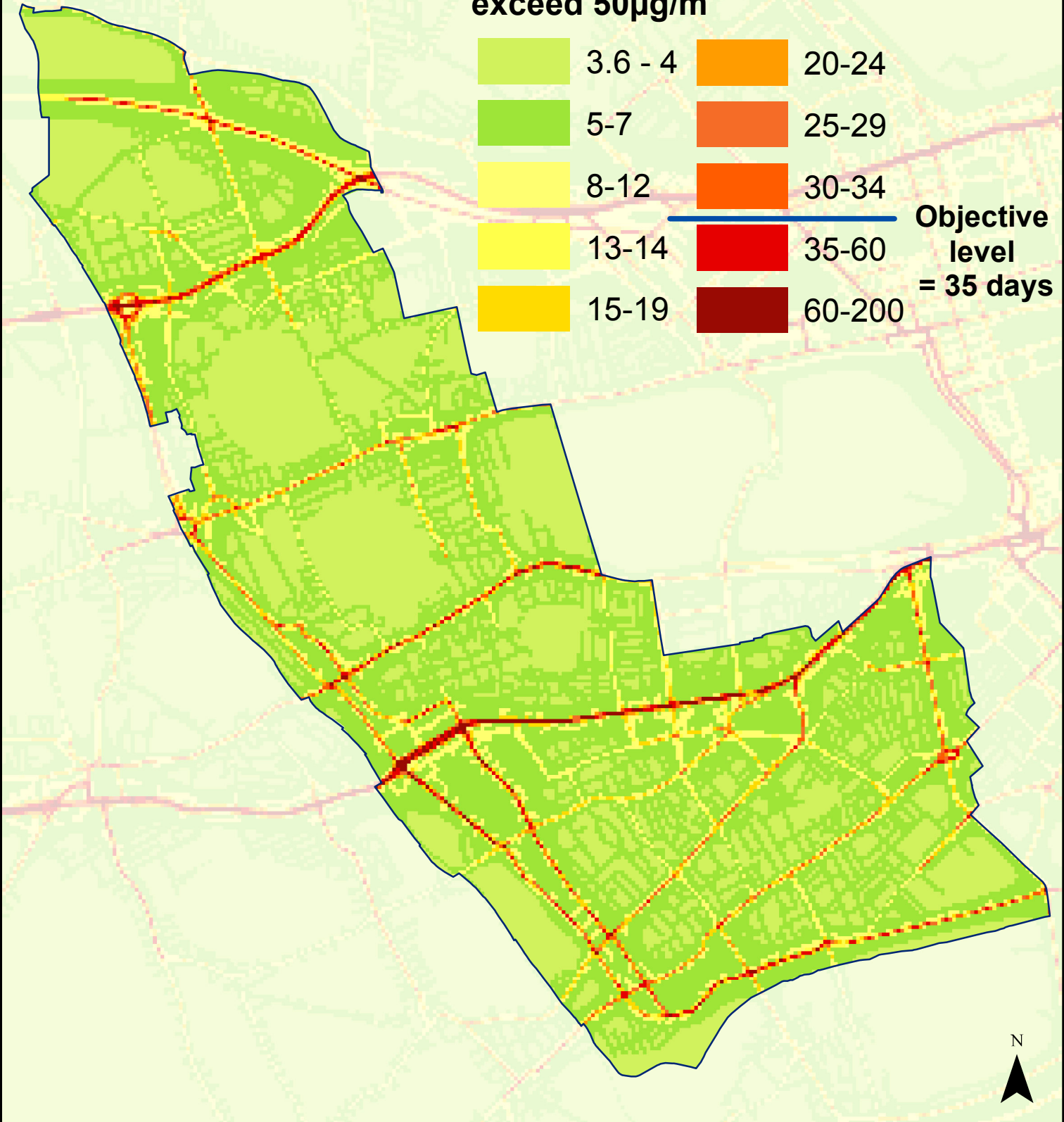


## Legend

Number of days per year daily mean concentrations of PM<sub>10</sub> exceed 50µg/m<sup>3</sup>



Objective level  
= 35 days



Modelled number of days when particulate matter (PM<sub>10</sub>) is above the daily mean objective level (50µg/m<sup>3</sup>) within the Royal Borough, using data from the London Atmospheric Emissions Inventory 2008