


# Becoming active in your neighbourhood

The Council works hard to make sure it listens to residents but there are many other organisations that represent the specific concerns of local neighbourhoods. These organisations allow individuals to come together to pursue their shared interest in ensuring their neighbourhoods are good places to live.

## Kensington and Chelsea Tenant Management Organisation (TMO)

If you are a tenant or a leaseholder in the Royal Borough's housing stock you have the opportunity to become a member of the TMO, which manages housing on behalf of the Council. The majority of the TMO's board of directors are made up from TMO residents and members.

As a member you can attend board meetings and all residents are able to participate through various committees and focus groups. The TMO has a dedicated Residents Involvement Team supporting all the TMO local residents associations and estate groups. The Residents Involvement Team also runs various training programmes and courses along with other participation events.


 020 7605 6500

 residentsfirst@kctmo.org.uk

 [www.kctmo.org.uk](http://www.kctmo.org.uk)

## Residents Associations

The Council recognises the key role that tenants and residents associations have in conveying the views of residents to the Council and other public bodies. Residents who are interested in joining an association or who wish to start their own group can go to the Council's website to find an association in their area, or contact the Community Engagement Team at the Council for more information.

 020 7598 4633

 [communityengagement@rbkc.gov.uk](mailto:communityengagement@rbkc.gov.uk)

 [www.rbkc.gov.uk/residents](http://www.rbkc.gov.uk/residents)



## [case study]

### World's End Residents Association

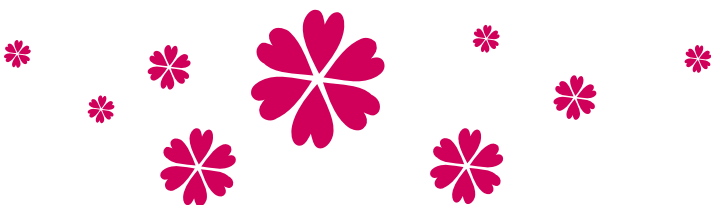
WERA was set up by the residents of the estate to represent the views and interests of all residents when dealing with the Council, its agents and contractors. It ensures that residents are regularly and properly consulted on what is happening on the estate. WERA tries to foster a wider sense of community and cooperation amongst all of the estate's residents and aims to ensure that all of the estate's communities are properly represented and are able to participate in its activities.

Any legal resident aged 16 or over can become a member of WERA by applying for membership to the Committee of the Association. WERA has a Management Committee of residents who meet once a month to discuss matters of interest to all residents of the World's End Estate. The Committee's main aim is to improve the estate and make it a better place in which to live. Any WERA member can become a member of the Committee by being nominated and elected at the WERA AGM. The Committee also plans and holds regular public meetings to try and keep all residents informed about what is happening on the estate.

 020 7795 3095


 [wera@worlds-end.org.uk](mailto:wera@worlds-end.org.uk)

 [www.worlds-end.org.uk/wera](http://www.worlds-end.org.uk/wera)



## Gold Standard Award Scheme for tenants and residents associations


Tenants and residents associations can apply to the Council to be recognised as a Gold Standard organisation. The award acknowledges the excellent work that associations do in representing residents. Anyone wanting to consult with or join a Gold Standard association can be confident that it is well run and representative.

 020 7598 4633

 [communityengagement@rbkc.gov.uk](mailto:communityengagement@rbkc.gov.uk)

## Starting a new association

It could be that there is an important issue no-one else is addressing or your area is not represented by a residents association. Why not think about setting up your own organisation with help of the Volunteer Centre and the Kensington and Chelsea Partnership?

 020 7598 4633

 [communityengagement@rbkc.gov.uk](mailto:communityengagement@rbkc.gov.uk)

## Freecycle

The Freecycle Network is a website helping local people dispose of their property by giving it away. Members update the site with details of any unwanted items and the other users simply collect them at a convenient time.


Each local group is moderated by a local volunteer and membership is free. You can find your nearest Freecycle group by visiting the website.

 [www.freecycle.org](http://www.freecycle.org)

## Notting Hill Housing

Notting Hill Housing is one of the UK's largest providers of affordable housing. It employs approximately 750 staff, manages 19,000 homes and houses nearly 50,000 people across London.

NHH depend on feedback from residents, as well as the invaluable time and effort supplied by volunteers. These are individuals and groups from every walk of life who live or work locally and are prepared to give up some of their free time to befriend a isolated person or give practical assistance around the neighbourhood.

 020 8357 5139

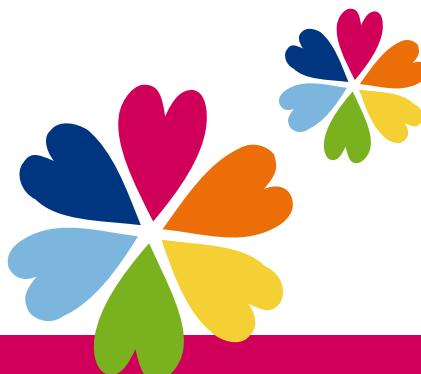
 [volunteer@nhhg.org.uk](mailto:volunteer@nhhg.org.uk)

 [www.nottinghillhousing.org.uk](http://www.nottinghillhousing.org.uk)

## Council events

Kensington and Chelsea Council organises and hosts events across the borough throughout the year. To keep up with the latest happenings keep an eye on the Council's online events calendar.


 [www.rbkc.gov.uk/events](http://www.rbkc.gov.uk/events)



## The Community Engagement Team

The Community Engagement Team works with Council departments and partners to devise, support and run projects that help build communities and neighbourhoods in which all our residents can thrive.

The Team works to strengthen community organisations. It empowers people to access services and helps contribute to the improvement of services. You can register your contact details with the team to be kept informed about community engagement projects in the Royal Borough.


 020 7598 4633

 [communityengagement@rbkc.gov.uk](mailto:communityengagement@rbkc.gov.uk)

## Annual Community Relations Forum

The Council's Annual Community Relations Forum is an opportunity for residents and anyone who has an interest in improving life in Kensington and Chelsea to participate in discussions with decision makers and those responsible for delivering services.

The Forum is a popular event that attracts up to 200 participants and is free and open to all.

 020 7598 4633

 [communityengagement@rbkc.gov.uk](mailto:communityengagement@rbkc.gov.uk)

