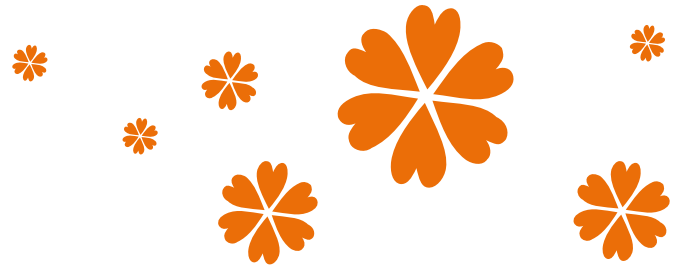


Voting and local democracy



The key principle of British democracy is that the electorate choose the men and women who make the decisions that shape society. Residents of Kensington and Chelsea are able to vote in a number of elections.

Who am I voting for?

Your vote helps decide who will represent you in either your local authority, Parliament, the Greater London Authority or the European Parliament. You also vote for the Mayor of London.

Can I vote?

There are different entitlements to vote depending on the election. You must be 18 years old or over to vote in a UK election but there are other criteria relating to nationality. These are summarised below:

To vote in a general election you must be:

- a British or Commonwealth citizen resident in the UK or
- a citizen of the Irish Republic resident in the UK

To vote in a European election, local government election, Greater London Authority election or London Mayoral election you must be:

- a British or Commonwealth citizen resident in the UK or
- a citizen of the Irish Republic resident in the UK or
- a citizen of an EU country resident in the UK

For more information about voting see


 www.aboutmyvote.co.uk

How do I register to vote?

In order to vote your name must be on the Electoral Register. You can register to vote if you live in the Royal Borough, are 17 or over and are of British, Irish, EU or Commonwealth nationality.

The electoral registration form must be filled in with your full name, address and nationality. You must live at the address when you apply to register and you cannot register before moving to an address. If you mainly live abroad please contact the helpline. Only those aged 18 or over can vote but 17 year olds should also be registered. 16 year olds can also register depending on their birthday. Nationality is regarded as passport/s held.

Once the completed form has been processed your name will be added to the electoral register and you will be entitled to vote in the area where you live.

 020 7361 3444

 elect@rbkc.gov.uk

 www.rbkc.gov.uk/yourcouncil/localdemocracy






How do I vote?

Several weeks before every election you will be sent a polling card informing you of the forthcoming election, the day on which the election will be held, and the polling station where you should vote.

You will only be able to vote at the polling station listed on your card. The polling station will be near to your home and the address will be clearly stated on the card.

If you will not be in the country on polling day or are unable to vote at your local polling station you can apply for a postal or proxy vote. Contact Electoral Services for more details.

 020 7361 3444

 elect@rbkc.gov.uk

 www.rbkc.gov.uk/yourcouncil/localdemocracy

For more information about voter registration see:

 www.aboutmyvote.co.uk